

CR 137



CR 137

WATERWAY

The 1000 GPM pre-piped waterway is located at the end of the 4th section, providing a 110' elevated master stream while maintaining a clear tip for rescue operations.

CAB / CHASSIS

Cyclone® II or Quest® chassis with integral torque box frame. Medium and long cabs available. All E-ONE cabs meet or exceed SAE J2420, J2422 and ECE R-29 crash testing standards, the benchmarks for crash testing and safety in the commercial trucking industry.



Buildings aren't getting shorter. Fires don't have a maximum height limit. So why should your aerial ladder be any different? Reaching more than 13 stories high, the new CR 137 is North America's tallest aerial ladder.

The CR 137 features narrow criss-cross under-slung stabilizers and a speedy set up – less than 45 seconds. The welded extruded aluminum ladder combined with advanced engineering provides a 2.5 to 1 structural safety factor, exceeding NFPA requirements. As with most E-ONE aerials, the integral torque box frame offers a rock solid foundation for the chassis and aerial, while providing a lower center of gravity than a bolt-on torque box for improved vehicle handling. Perhaps the most impressive feature of the CR 137 is its ability to reach a target that is 110' high AND 80' horizontally off the side while supporting a 750 lb personnel tip load. For maximum reach, strength, stability and safety, make sure your crew is riding in the new E-ONE CR 137.

ALL EXTRUDED-ALUMINUM CONSTRUCTION

Using high strength 6061-T6 aluminum-alloy extrusions achieves a high strength-to-weight ratio resulting in an extremely strong and lightweight aerial ladder. The aluminum ladder is corrosion-resistant for extended years of service. Ladder sections are "K"-braced for added strength. Ladder rungs have an integral slip-resistant surface eliminating the need for rubber rung covers. The swirled, natural finish requires little maintenance and painting of the aerial is not required. Welds and associated ladder assemblies are easily inspected.



AERIAL HEIGHT

11' - 10" Overall height with SideStacker or no pump style body; 12' - 1" overall height with center hosebed

Note: 11' - 7" available with Cyclone II aerial cab.

BODY

Extruded aluminum body with several configurations available, including: SideStacker® hose bed, center hose bed and a "Truck Company" style with no pump or tank.

OPTIONAL FIRE FIGHTING PACKAGE

Hale or Waterous pumps from 1250-2000 GPM
300 or 500 Gallon tank
Class A, CAFS or ATP foam systems available

SUSPENSION OPTIONS

Taper leaf front suspension with adjustable shocks and leaf spring rear are standard. Available with Independent Front Suspension as well as Ridewell Dynalastic rear suspension for outstanding ride quality.



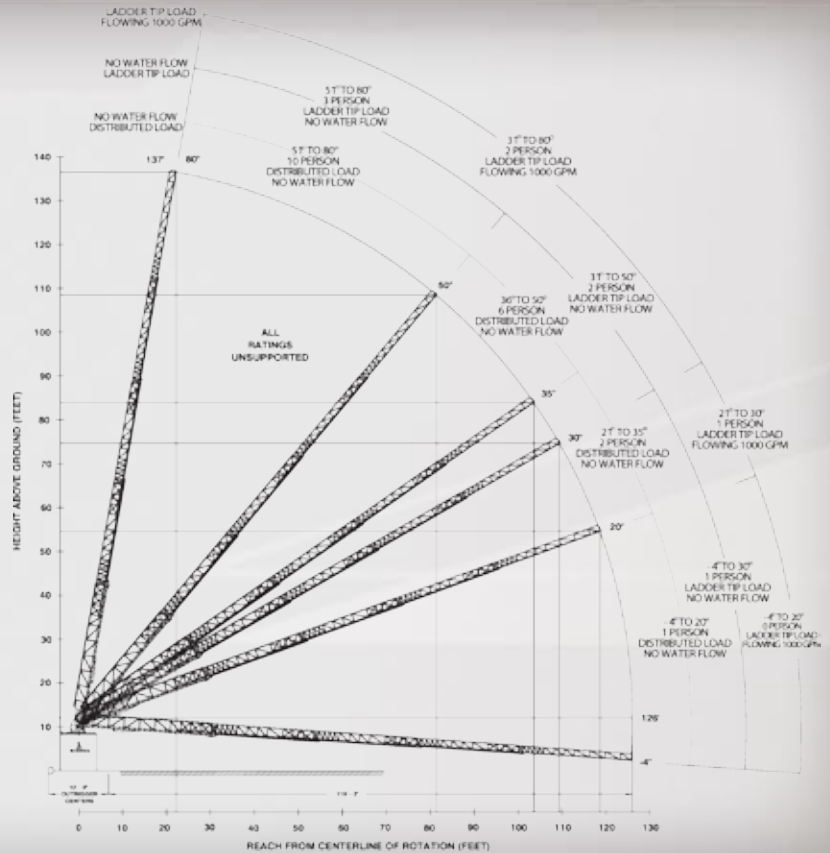
Load and Reach

The CR 137 aerial is rated in multiple configurations clearly shown on a permanently mounted load chart on the ladder base section. Tip and distributed loads are graphically depicted eliminating the need for any auxiliary load sensing systems. An easy to read inclinometer is standard equipment on all load charts.

VERTICAL: 137'

HORIZONTAL (at Zero Degrees):

Reach	Tip Load
126' - 0"	250 lb
109' - 4"	500 lb
81' - 4"	750 lb



Two sets of criss-cross under-slung outriggers offer a lower center of gravity for improved handling and provide additional compartment space over each jack. The narrow 13' - 8" stabilizer spread allows the aerial to be set up closer to buildings tight, high-rise access lanes while maintaining full aerial rotation.



With its industry-leading reach, the CR 137 provides quick access to structures up to 13 stories or buildings with large setbacks. (The structure above is approximately 128' from ground level to the roof.)