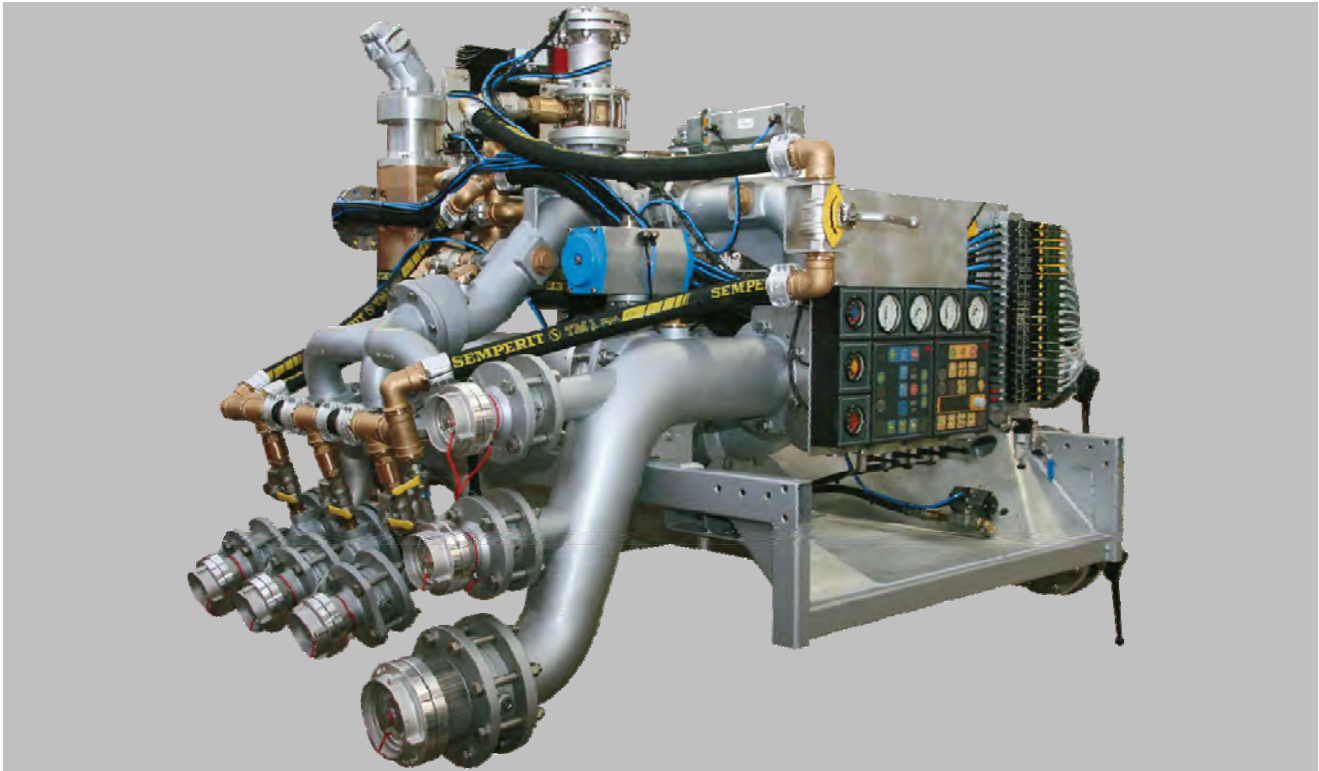


HYDROMATIC

Industrial - demand balance pressure system



Description

Operation in industry – especially in chemical industry, refineries, tank farms etc. requires much flexibility from fire fighters, regarding the use of water and foam concentrate. The HYDROMATIC unit permits a simple adaptation to the particular operation situation.

Benefits

All purpose usability

- stepless proportioning
- universal adjustment per outlet
- individual water or foam per outlet
- can be used for all kinds of foam concentrate, even structure viscose
- foam concentrate supply external or from foam tank

Easiest operation

- due to Rosenbauer LCS - display - also pump, light-mast and other truck components can be operated
- manual adjustment of the proportioning rate directly on the outlets
- no priming pump for the foam concentrate necessary

No foam concentrate in the water pump

Emergency operation

- pneumatic solenoid valves can be manual operated
- adjustment of the foam pressure manual to 0,5 bar (7,2 psi) over water pressure, if pressure sensor fails – foam proportioning system works

Maintenance friendly

- no drive engine for the foam concentrate pump
- easy hydraulical regulation

According NFPA 1901 as „Demand balanced pressure system“

HYDROMATIC

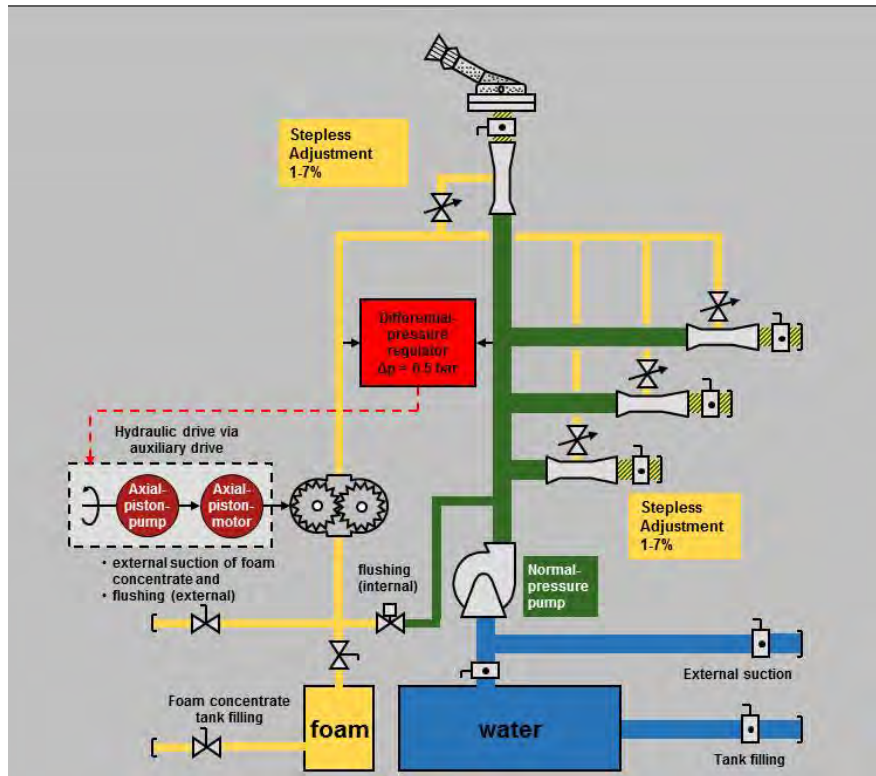
Industrial - demand balance pressure system



Operation of the water pump, light mast and HYDROMATIC via LCS (Logic Control System) display



Adjustment of the proportioning rate stepless directly on the outlets



Scheme of the HYDROMATIC unit: hydraulically driven gear pump is controlled by the water and foam pressure, stepless adjustment of the foam proportioning on the outlets

Technical Data

Design	with hydraulically driven foam pump - from the second power take-off (PTO) of the fire truck, individual foam proportioning on the outlets
Performance	fire fighting pumps from 5.000 lpm up to 10.000 lpm (1.320 gpm up to 2.640 gpm) (depends on water pump)
Foam pump	1-stage gear pump, up to 450 lpm (120 gpm) (Option: 700 lpm (185 gpm)) at 16 bar (232 PSI)
Material of foam pump	brass
Regulation	elektronical differential pressure regulation water/foam
Torque of PTO	460 Nm (339 lbf ft) (at 700l (185 gal) version: 560 Nm (413 lbf ft))
Proportioner	1 ½", 2 ½", 4" or 6"
Material proportioner	light alloy (Option: gunmetal)
Accuracy	-0 / +30% relative, max. +1% absolute
Foam supply	only on demand, no foam flow back to the foam tank
Usability	for all kinds of foam concentrate

NP: Normal pressure; FC: foam concentrate; PTO: power take-off

Contact

ROSENBAUER INTERNATIONAL AG
 Paschinger Straße 90
 4060 Leonding, Austria
 Tel.: +43 732 6794-0
 Fax: +43 732 6794-91

www.rosenbauer.com

www.facebook.com/rosenbauergroup

Text and illustrations are not binding. The illustrations may show optional extras only available at extra charge. Rosenbauer retains the right to alter specifications and dimensions given herein without prior notice.

KR323
 2012-12_RJUN