



## Capacitive Sensors

### Series 80 - PNP

Housing M 30 x 1.5

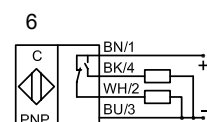
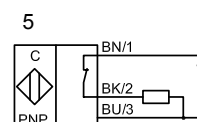
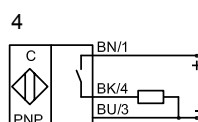
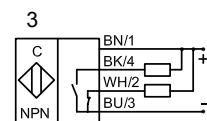
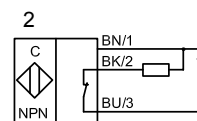
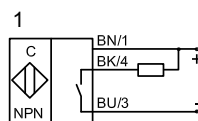
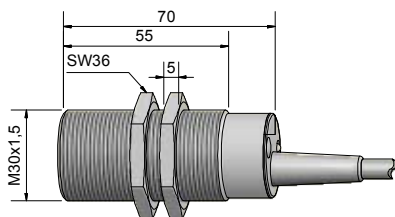
- Housing material: PA / PPO
- Sensing distance 2...20 mm adjustable
- II 3G EEx nA II T6 X For use in zone 2
- II 3D IP67 T101°C X For use in zone 22



Certificate:

#### Technical data

	Flush mountable
Operating distance $S_n$	10 mm
Operating distance min. / max. adjustable	2...20 mm
Electrical version	4-wire DC
Output	Antivalent (NO + NC)
<b>Type NPN</b>	
<b>Art.-No.</b>	
Connection diagram No.	
<b>Type PNP</b>	
<b>KAS-80-A14-A-K-3G-3D-NL</b>	
<b>Art.-No.</b>	
<b>KA 0817</b>	
Connection diagram No.	
6	
Operating voltage ( $U_B$ )	12...30 V DC
Output current max. ( $I_o$ )	2 x 200 mA
Voltage drop max. ( $U_o$ )	≤ 2.0 V
Permitted residual ripple max.	5 %
No-load current ( $I_o$ )	< 15 mA
Frequency of operating cycles max.	150 Hz
Permitted ambient temperature	-25...+70 °C
LED-display	Yellow
Protective circuit	Built-in
Degree of protection IEC 60529	IP 67
Norm	EN 60947-5-2
Connection	2 m, PVC, 4 x 0.5 mm <sup>2</sup>
Housing material	PA / PPO
Active surface	PA / PPO
Lid	PA / PPO



**Made in Germany**

All specifications are subject to change without notice. (17.01.2013)