

# JUMBO WATER CURTAIN NOZZLE



## TECHNICAL DATA

MODEL	JC-Bronze construction to IS : 318 JCS - Stainless Steel construction
SIZE	65 NB , 80 NB, 100 NB
MAXIMUM WORKING PRESSURE	14 Bar (200 PSI)
FLOW AT 7 Kg. / Sq. Cm.	65 NB - 1000 LPM 80 NB - 2000 LPM 100 NB - 3000 LPM
END CONNECTION	Flange to ANSI B16.24 #150 for Bronze ANSI B16.5 #150 for SS 63 NB instantaneous male connection for 65 NB size (optional)
FINISH	Red RAL 3000
ORDERING INFORMATION	Specify Model Number, Size, Water curtain type, Flange connection specification



## DESCRIPTION

Jumbo Water Curtain Nozzle produces a flat curtain of water projecting upward. These nozzles are used to segregate the area by creating a water curtain.

The nozzle is made out of bronze as well as stainless steel construction. A nozzle up to 1000 LPM flow can be provided with instantaneous male connection for connecting the fire hoses for portable application. The area coverage graph provided is in standstill air condition, hence the wind velocity at the site of installation is to be considered while designing the system for area coverage.

It is recommended to install main pipeline stainer in the system.

## MAINTENANCE

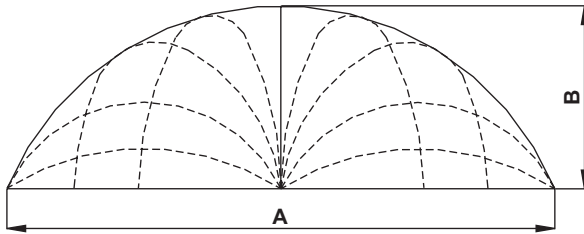
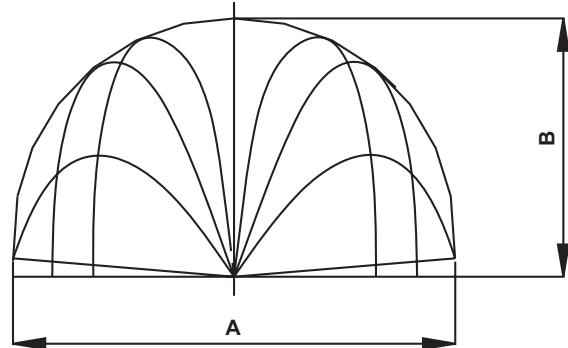
The Jumbo curtain nozzle must be handled with due care. For best results, the storage as well as any further shipment be made in original packing only.

Nozzle which is visibly damaged should not be installed.

It is recommended that water spray system be

inspected regularly by authorised technical personnel. The nozzle must be checked for atmospheric effects, external and internal obstruction, blockage if any. The nozzle should be cleaned or replaced if required. The system must be operated with optimum water flow at least twice in a year or as per the provisions of NFPA / TAC or local authority having jurisdiction.

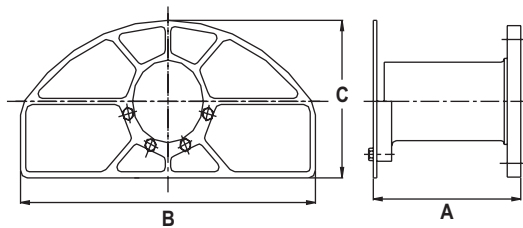
The owner is solely responsible for maintaining the water spray system and the components therein so that it performs properly when required.

**WATER CURTAIN TYPE - A**

**WATER CURTAIN TYPE - B**

**APPROXIMATE WATER CURTAIN  
COVERAGE**

SIZE	FLOW IN LPM AT 7 KG/SQ. CM.	A MTS	B MTS
65 NB	1000	18	6.5
80 NB	2000	27	9
100 NB	3000	33	11

**APPROXIMATE WATER CURTAIN  
COVERAGE**

SIZE	FLOW IN LPM AT 7 KG/SQ. CM.	A MTS	B MTS
65 NB	1000	16	8
80 NB	2000	25	12
100 NB	3000	30	14


**DIMENSION** in millimeter (Approximate)

SIZE	A	B	C
65 NB	250	450	205
80 NB	250	450	205
100 NB	250	500	220

**Note:**

The spray data is obtained from the testing carried out in still air.

#### LIMITED WARRANTY

HD FIRE PROTECT PVT. LTD. hereby referred to as HD FIRE warrants to the original purchaser of the fire protection products manufactured by HD FIRE and to any other person to whom such equipment is transferred, that such products will be free from defect in material and workmanship under normal use and care, for two (2) years from the date of shipment by HD FIRE. Products or Components supplied or used by HD FIRE, but manufactured by others, are warranted only to the extent of the manufacturer's warranty. No warranty is given for product or components which have been subject to misuse, improper installation, corrosion, unauthorized repair, alteration or un-maintained. HD FIRE shall not be responsible for system design errors or improper installation or inaccurate or incomplete information supplied by buyer or buyer's representatives.

HD FIRE will repair or replace defective material free of charge, which is returned to our factory, transportation charge prepaid, provided after our inspection the material is found to have been defective at the time of initial shipment from our works. HD FIRE shall not be liable for any incidental or consequential loss, damage or expense arising directly or indirectly from the use of the product including damages for injury to person, damages to property and penalties resulting from any products and components manufactured by HD FIRE. HD FIRE shall not be liable for any damages or labour charges or expense in making repair or adjustment to the product. HD FIRE shall not be liable for any damages or charges sustained in the adaptation or use of its engineering data & services. In no event shall HD Fire's product liability exceed an amount equal to the sale price.

The foregoing warranty is exclusive and in lieu of all other warranties and representation whether expressed, implied, oral or written, including but not limited to, any implied warranties or merchantability or fitness for a particular purpose. All such other warranties and representations are hereby cancelled.

#### NOTICE :

The equipment presented in this bulletin is to be installed in accordance with the latest publication standards of NFPA or other similar organisations and also with the provision of government codes or ordinances wherever applicable.

The information provided by us are to the best of our knowledge and belief, and are general guidelines only. Site handling and installation control is beyond our reach. Hence we give no guarantee for result and take no liability for damages, loss or penalties whatsoever, resulting from our suggestion, information, recommendation or damages due to our product.

Product development is a continuous programme of HD FIRE PROTECT PVT. LTD. and hence the right to modify any specification without prior notice is reserved with the company.



C-3/6, THE NANDANVAN IND. ESTATE, L.B.S. MARG, THANE 400 604., INDIA.  
• PHONES : + (91) 22 2583 5434 • 2582 6958 • 2582 6793  
• FAX : +(91) 22 2581 2524 • 6796 9049  
• EMAIL : info@hdfire.com • WEBSITE : www.hdfire.com