

## Mill Hose - White

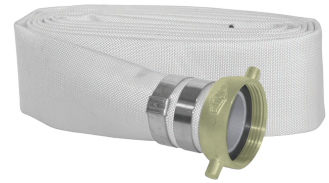
Ideal for open end discharge applications. **Not intended for fire fighting service.**

- outer construction: single jacket, all synthetic
- tube construction: black, natural rubber liner

### Suction Couplings

#### NH (NST) Thread

NH (NST) Thread	Clamps per End	Length	Working Pressure PSI	Part #
1½"	2	25'	75	<b>M15-25KAF</b>
1½"	2	50'	75	<b>M15-50KAF</b>
2½"	2	25'	50	<b>M25-25KAF</b>
2½"	2	50'	50	<b>M25-50KAF</b>



coupled with NST suction fitting

#### NPSH Thread

NPSH Thread	Clamps per End	Length	Working Pressure PSI	Part #
1½"	2	25'	75	<b>M15-25KAS</b>
1½"	2	50'	75	<b>M15-50KAS</b>
2"	2	25'	75	<b>M20-25KAS</b>
2"	2	50'	75	<b>M20-50KAS</b>
2½"	2	25'	50	<b>M25-25KAS</b>
2½"	2	50'	50	<b>M25-50KAS</b>
3"	3	25'	50	<b>M30-25KAS</b>
3"	3	50'	50	<b>M30-50KAS</b>



coupled with NPSH suction fitting

### Cam and Groove Couplings

#### Cam and Groove

Cam and Groove	Clamps per End	Length	Working Pressure PSI	Part #
1½"	2	25'	112	<b>M15-25GAX</b>
1½"	2	50'	112	<b>M15-50GAX</b>
2"	2	25'	112	<b>M20-25GAX</b>
2"	2	50'	112	<b>M20-50GAX</b>
2½"	2	25'	112	<b>M25-25GAX</b>
2½"	2	50'	112	<b>M25-50GAX</b>
3"	2	25'	112	<b>M30-25GAX</b>
3"	2	50'	112	<b>M30-50GAX</b>
4"	2	25'	112	<b>M40-25GAX</b>
4"	2	50'	112	<b>M40-50GAX</b>



coupled with cam and groove fitting

Consult the factory for pricing and availability for any of the following features:

- additional lengths
- other configurations