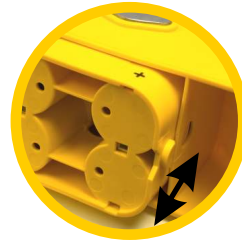


LED 3 Volt Light

WARNING DEVICES



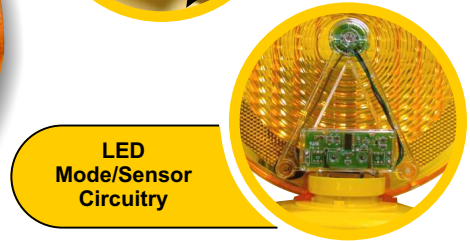
On/Off and Mode Switches



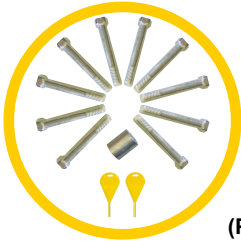
Battery Case Snaps In and Out



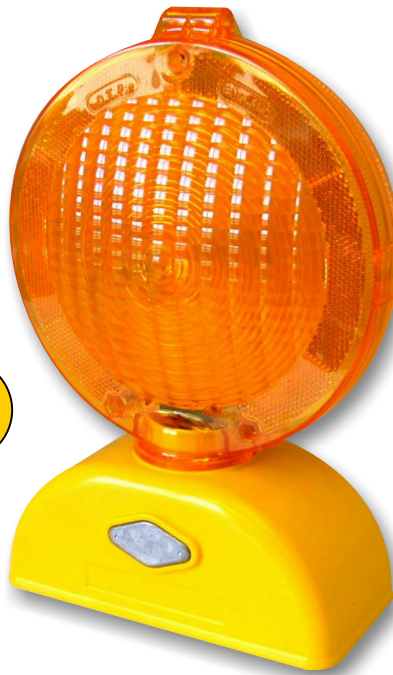
Battery Case w/Battery Direction Indicators



LED Mode/Sensor Circuitry



Included Hardware (Per Case of 10 Lights)



Expanded Color Selection

Features:

- Optically correct polycarbonate lens and high impact case.
- Exceeds ITE standards and MUTCD visibility specifications.
- Tested by a Coast Guard approved laboratory.
- Battery contacts made of corrosion resistant stainless steel.
- Light weight, may be self-certified for compliance with NCHRP-350 crash test standards.
- Standard light is 3 way (flash, steady burn, off), also available as a type "A" or "C" light.
- Each light supplied with mounting hardware: bolts, switch pins, and wrench. Cup washers available at extra cost.
- Will operate on 2 or 4 "D" cell batteries.
- Available in mono or bi-directional type "C" lights.
- Standard package: 10 lights per carton.
- Weight per carton: 17 lbs.



#AC4D

- #AC4D - Yellow
- #AC4D-OR - Orange
- #AC4D-BK - Black
- #AC4D-GR - Green
- #AC4D-BL - Blue

DICKE Safety Products • 1201 Warren Ave. • Downers Grove, Illinois 60515 • Ph: 877.891.0050 • Fax: 630.969.3973
 1845 Anunsen Street N.E. • Salem, Oregon 97301 • Ph: 800.333.5641 • Fax: 503.364.0340



Distributed By:

www.dicketool.com