



Capacitive Sensors Series 90 - AC / DC

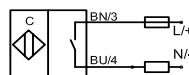
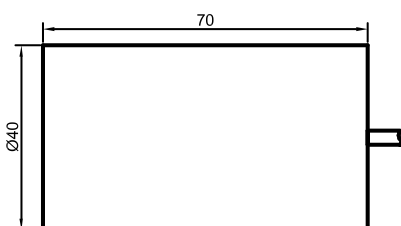
- Housing \varnothing 40 mm
- Housing material: PA / PPO
- Sensing distance 3...35 mm adjustable

Certificate:



Technical data	Flush mountable
Operating distance S_n	20 mm
Operating distance min. / max. adjustable	3...35 mm
Electrical version	2-wire AC / DC
Output function	Normally open (NO)
Type	KAS-90-40-S
Art.-No.	904 400
Operating voltage (U_B)	20...250 V AC / DC
Output current max. (I_o)	330 mA
Load current min.	5 mA
Voltage drop max. (U_o)	≤ 6 V
No-load current (I_o)	Typ. 2.5 mA
Frequency of operating cycles max.	25 Hz
Permitted ambient temperature	-25...+70 °C
LED-display	Yellow
Protective circuit	Built-in
Degree of protection IEC 60529	IP 67
Norm	EN 60947-5-2
Connection cable	2 m, PVC, 2 x 0.75 mm ²
Housing material	PA / PPO
Active surface	PA / PPO
Lid	PA / PPO

All specifications are subject to change without notice. (21.09.2009)



Made in Germany