

LUDOCHARGER 1

DATA LOGGING BATTERY CHARGER FOR SINGLE BATTERY SYSTEMS



MODEL 092-2015

PURPOSE DESIGNED FOR EMERGENCY VEHICLES

RECORDS CHARGER ACTIVITY FOR QUICK AND SIMPLE CHARGING ANALYSIS

SUPPORTS PARASITIC LOADS WITHOUT LIFTING VOLTAGE – **NO MORE OVERCHARGED BATTERIES**

HIGH POWER DENSITY (MORE OUTPUT FROM SMALLER CHARGER)

CAN CHARGE BATTERIES FROM FLAT

CAN CHARGE DIFFERENT BATTERY TECHNOLOGIES CORRECTLY (IE LEAD-ACID / GEL / AGM ETC)

USER PROGRAMMABLE DIGITAL TECHNOLOGY

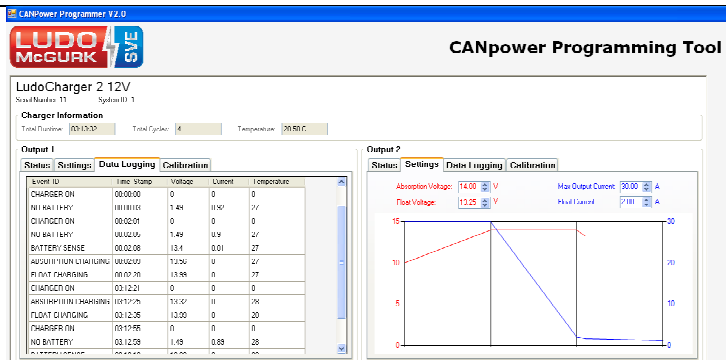
MANUAL OR AUTOMATIC INPUT VOLTAGE SELECTION (110V OR 230V)

INTERACTS WITH OTHER CANPOWER DEVICES

LOW FREQUENCY – LOW NOISE

STRONG CONSTRUCTION

3 YEARS WARRANTY



The LUDOCHARGER series employs our CANpower Digital Technology, as well as Advanced Synchronous Rectification Technology to give extremely accurate and efficient battery charging control with user programmability to suit different battery types and applications.

The programmability of the LUDOCHARGER 1 means that batteries of different chemistries can be charged (Lead-Acid/Gel/AGM etc) according to their needs. Active output control will also cater for parasitic loads without enhancing voltage thus safeguarding battery life.

It is simple to install and will interface with any or all of our CANpower digital devices for performing various control functions in an emergency vehicle, with very simple to use programming software which is downloadable free-of-charge from our website.

MODEL #	092-2015-12	092-2015-24
VOLTAGE IN	115V OR 230V AC 50/60HZ	
CURRENT IN	3.4A @ 230V OR 6.2A @ 110V	
VOLTAGE OUT	12V	24V
CURRENT OUT	30A	15A
WEIGHT	5.85KG	
DIMENSIONS	294L X 151W X 80H (mm)	

**DESIGNED, DEVELOPED AND MANUFACTURED IN
GREAT BRITAIN**



LUDO McGURK SVE

UNIT 3 CROSSFIELD ROAD, HANDFORTH, CHESHIRE, SK9 3LN.

TEL: +44 1625 527 673

FAX: +44 1625 549 929

WEB: www.ludomcgurk.co.uk

EMAIL: sales@ludomcgurk.co.uk