



## Capacitive Sensors

Series 70 - NPN  
Series 80 - PNP



- Housing M 32 x 1.5
- Housing material: PA / PPO
  - Sensing distance 1...40 mm adjustable

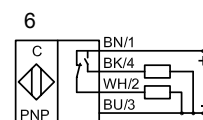
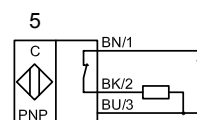
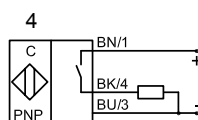
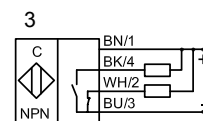
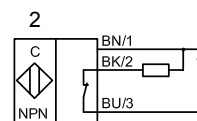
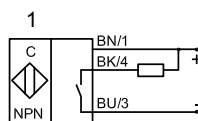
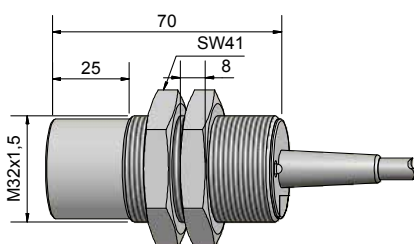
Certificate:



Technical data	Non-flush mountable	Non-flush mountable
Operating distance $S_n$	25 mm	25 mm
Operating distance min. / max. adjustable	1...40 mm	1...40 mm
Electrical version	3-wire DC	4-wire DC
Output function	Normally open	Antivalent
<b>Type NPN</b>	<b>KAS-70-35-S-M32</b>	<b>KAS-70-35-A-M32</b>
<b>Art.-No.</b>	<b>720 600</b>	<b>720 200</b>
Connection diagram No.	1	3
<b>Type PNP</b>	<b>KAS-80-35-S-M32</b>	<b>KAS-80-35-A-M32</b>
<b>Art.-No.</b>	<b>820 600</b>	<b>820 200</b>
Connection diagram No.	4	6
Operating voltage ( $U_b$ )	10...35 V DC	10...35 V DC
Output current max. ( $I_o$ )	250 mA	2 x 250 mA
Voltage drop max. ( $U_d$ )	≤ 2.0 V	≤ 2.0 V
Permitted residual ripple max.	10 %	10 %
No-load current ( $I_o$ )	Typ. 15 mA	Typ. 15 mA
Frequency of operating cycles max.	50 Hz	50 Hz
Permitted ambient temperature	-25...+70 °C	-25...+70 °C
LED-display	Green / yellow	Green / yellow
Protective circuit	Built-in	Built-in
Degree of protection IEC 60529	IP 67*	IP 67*
Norm	EN 60947-5-2	EN 60947-5-2
Connection cable	2 m, PVC, 3 x 0.75 mm <sup>2</sup>	2 m, PVC, 4 x 0.5 mm <sup>2</sup>
Housing material	PA / PPO	PA / PPO
Active surface	PA / PPO	PA / PPO
Lid	PA / PPO	PA / PPO
Media optimized	Yes	Yes
<b>Accessories</b> (is delivered with the sensor)	2 pieces nuts M 32	2 pieces nuts M 32

All specifications are subject to change without notice. (06/2014)

\* With sealed potentiometer screw



Made in Germany