



Capacitive Sensors Series 2000 - **quattro**³

Housing Ø 30 mm

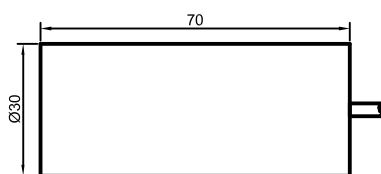
- Housing material: brass
- Flush mountable
- Sensing distance 2...25 mm adjustable
- Multifunction sensor: NPN / PNP;
NO- / NC function switchable

Certificate:

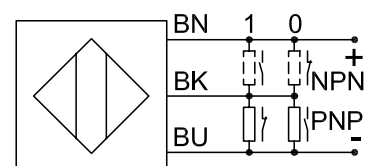
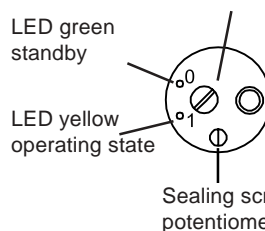


Technical data

Operating distance S_n [mm], flush mounting	20, yes
Operating distance min./max. [mm] adjustable	2...25
Electrical version	3-wire DC
Output	NO/NC switchable
Type NPN/PNP switchable	KAS-2000-30
Art.-No.	770 500
Connection diagram No.	see below
Operating voltage (U_B)	10...35 V DC
Output current max. (I_o)	400 mA
Load current min.	-
Voltage drop max. (U_d)	≤ 2.0 V
Permitted residual ripple max.	10 %
No-load current (I_o)	typ. 15 mA
Frequency of operating cycles max.	50 Hz
Permitted ambient temperature	-25...+70°C
LED-display	green and yellow
Protective circuit	built-in
Degree of protection IEC 529	IP 67
Connection cable	2 m 3 x 0.75 mm ²
Housing material	brass
Active surface	PA
Lid	PA



Sealing screw, change-over switch



All specifications are subject to change without notice. (05/2004)