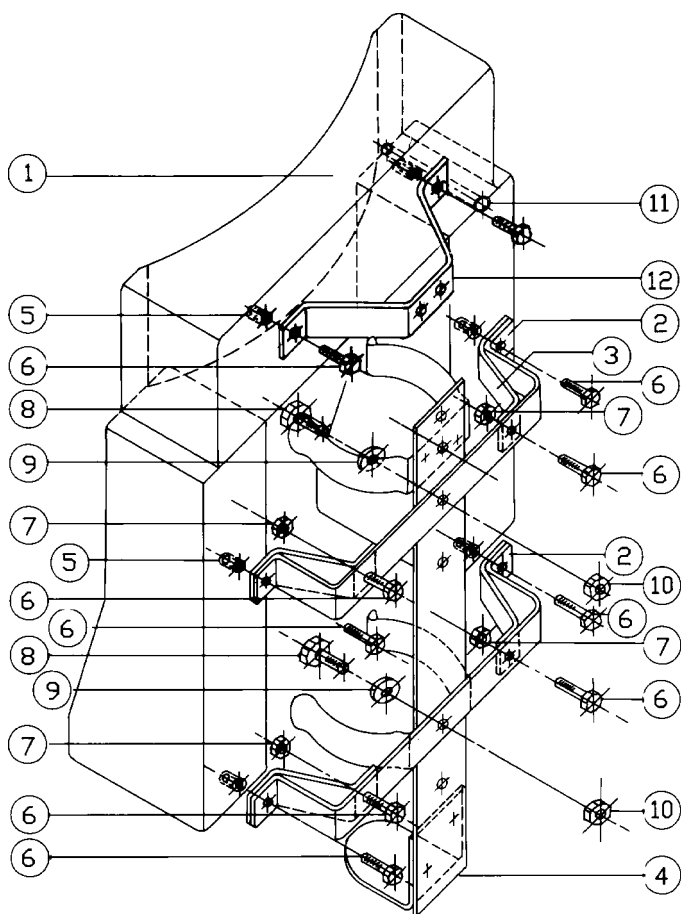


CUSHIONED BACK REST MOUNTING INSTRUCTIONS AND PARTS LIST



ITEM NO.	PART NO.	DESCRIPTION	QTY.
1	3015- * -105	Cushion Seat Fabrication	1
2	3015-000-105	Mounting Brackets	2
3	3015-000-110	Support Brackets	4
4	*	WALKAWAY® Bracket (must be ordered separately)	1
5	9065-002508	1/4-20 "T" Nut (pressed into seat back)	6
6	9010-102512	1/4-20 x 3/4" Hex. Head MS	10
7	9012-102500	1/4-20 Hex. head Locknut	4
8	9010-103116	5/16-18 x 1" Hex. Head MS	2
9	9014-113100	5/16 ID Flat Washer	2
10	9012-103100	5/16-18 Hex. Head Nut	2
11	3015-180-105	Aluminum Tube (optional for use with cable release)	1
12	3015-000-115	Headrest Bracket	1

PROCEDURE FOR MOUNTING SEAT

1. Determine where seats are to be mounted and if sufficient room exists
 - a. CBR-18 seats require 18" of width, with 10" between cushions
 - b. CBR-20 seats require 20" of width, with 12" between cushions - for use with SCOTT® SCBA/harness mounted regulator
2. Attach mounting brackets (2), head rest bracket (12) and support brackets (3) to back of seats with hardware provided
3. Lay the seat down with the cushion side up
4. Place self contained breathing apparatus unit into WALKAWAY® bracket (4)
5. Lay WALKAWAY bracket with SCBA on the mounting brackets (2) between back cushions
6. 5/16" holes in center of WALKAWAY brackets should line up with holes in center of mounting brackets, except as follows:
 - a. New holes may have to be drilled in either the WALKAWAY bracket or mounting brackets depending upon the type of SCBA being used
 - b. New holes may have to be drilled off center in the mounting brackets, to compensate for the harness mounted regulator on SCOTT SCBA
7. Remove SCBA and attach WALKAWAY bracket to mounting brackets
8. Place complete seat assembly in area to be mounted
 - a. The average firefighter's helmet should be level with the headrest cushion, with the brim going under the bottom of the headrest
 - b. The two mounting brackets and the head rest bracket should be attached to a firm mounting surface
9. Once the proper mounting position has been determined, you are ready to mount the seat
 - a. Ideally, the mounting bolt should go through the WALKAWAY bracket, mounting bracket and through the mounting surface
 - b. Place washers (not supplied) on the mounting bolt between the mounting bracket and mounting surface to build up to thickness of 1/4-20 nut, or use 5/16 nut if 5/16-18 bolt is being used
 - c. Be sure that mounting bolt does not protrude into the air cylinder when assembly is completed

*Refer to ZICO catalog for correct model number.

See other side for Cable Release in conjunction with Mechanical WALKAWAY® bracket.

MECHANICAL BRACKET with CBR-CR CABLE RELEASE in CBR STYLE SEAT

The Cable Release is designed for use with the complete Cushioned Backrest Seat and Mechanical WALKAWAY® bracket. This feature allows the cam to be opened by simply pulling the release ring, rather than having to reach around and under the cushion to release the cam stud.



INSTALLATION INSTRUCTIONS

1. Refer to item 11 on opposite page. A 3/8" diameter hole has been pre-drilled in the seat back. The hole is on the center line of the shoulder cushion where it meets the head rest cushion. Locate the hole and use a sharp punch to pierce the cushion, being careful not to go through the wood and into the fabric on the other side.
2. Insert the 3/8" diameter tube from the back side of the cushion, pushing carefully and spreading the cushions on the front side to allow the tube to move forward without ripping the fabric. The flared end of the tube will stick out on the back side of the seat when fully inserted.
3. Slide the 3/32" diameter cable through the aluminum tube from the front side of the cushion.
4. Cable will come down behind the seat. Place running end of cable through the hole in the cam stud and then through the hole in the 5/16-18 x 3/4" machine screw. Attach 5/16" I.D. washer and nut and hand tighten.
5. Close clamp arms and push knob on cam stud downward to locked position.
6. Pull cable taut leaving approximately one inch of cable exposed between the release ring and the head cushion. Nut and screw should be against the bottom of the cam stud.
7. Tighten nut on 5/16" screw and hold cable in place.
8. Extra cable may be cut off or simply bent back out of the way.
9. Cable Release Assembly should now be operational.



Ziamatic Corp.

10 West College Avenue, P.O. Box 337, Yardley, PA 19067-0587 • (215) 493-3618 • FAX: (215) 493-1401

*ZICO is a registered trademark for fire, safety and marine products made by Ziamatic Corp.

CALL TOLL FREE 800-711-FIRE

Copyright Ziamatic Corp. 6-96