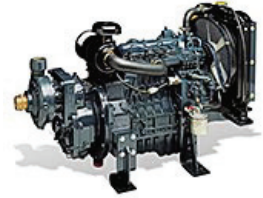




## SPECIFICATIONS – MOTOR PUMPS: E300 SERIES A Combination Apparatus in a Skid-Mounted Design

The E300 Series Motor Pump provides the versatility of a combination apparatus in a skid-mounted design. Equipped with Kubota® 1335cc diesel engine and a Waterous CPT-2 Series Fire Pump, the E300 produces a maximum flow of 325 GPM (1200 L/min) or a maximum pressure of 210 PSI (14.5 bar).



### Pump Specifications:

**Type:** Combination (E302-A)  
**Intake:** 3 in. female NPT (Model E302-A)  
**Discharge:** 2 in. female NPT (Model E302-A)  
**Volute Body and Head:** Close-grained gray iron or bronze  
**Impeller:** High-strength, corrosion-resistant bronze, double-hubbed to balance hydraulic thrust, mechanically balanced to eliminate vibration.

**Wear Rings:** Long wearing bronze. Easy to replace when required to restore original pump efficiency.

**Shaft Seal:** Spring-loaded mechanical type. Never needs adjustment.

**Priming Systems (Optional)**  
 The priming system consists of either a Waterous hand or electric primer shipped loose for remote mounting.

### Engine Specifications:

**Kubota Industrial Engine Model V1305E-2**

**Displacement:**

1335 cc (81.50 cu. in.)

**Output:**

22.3 kW (30 HP) @ 3000 RPM

**Lubrication:**

Full pressure system with an automotive-style oil filter. Oil fill tube with dipstick.

**Fuel:**

Diesel fuel No. 2-D (ASTM D975) (DIN 51601)

**Alternator:**

12 VDC, 30 AMP

**Starter:**

12 VDC, 1.2 kW

**Battery Requirement:**

450-540 CCA range at 0° F

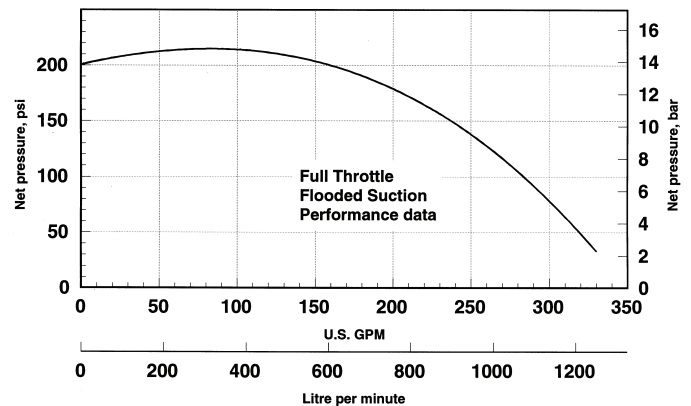
### Dimensions and Weights / Performance Curve

Length (in/cm)	Width (in/cm)	Height* (in/cm)	Weight (lb/kg)
42.58 (108.2)	22.97 (58.3)	42.55 (108.1)	553 (251)

Performance Curve for E302

Pump model: CPT2

Date: 1/7/97



### Industry-Leading Sales and Support

When you purchase Waterous equipment, not only do you get quality products, you get quality service. Our expert service technicians are the best in the business and they are always happy to answer any service questions you might have.

**Sales/Applications Assistance**

Phone: 651-450-5234 (Press 3)  
 pumps@waterousco.com

**Service Assistance**

Phone: 651-450-5200  
 Fax: 800-488-1228  
 service@waterousco.com