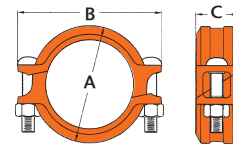
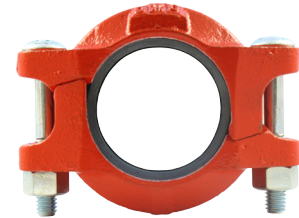




MODEL V-Z05 STANDARD RIGID COUPLING

Angle-Pad Design

The VGS Model V-Z05 is an angle-pad design standard rigid coupling for general piping applications where rigidity is required including valve connections, mechanical rooms, fire mains and long straight runs. The angle-pad design allows the coupling housings to slide along the bolt pads when tightened. The result is an offset clamping action which provides a rigid joint that resists flexural and torsional loads. Support and hanging requirements correspond to ANSI B31.1, B31.9 and NFPA 13.



1-1/4" ~ 10"

Sizes available: 1-1/4 in ~ 10 in / 32 mm ~ 200 mm
Working Pressure: Up to 300 psi / 20 bar



Nominal Size mm/in	Pipe O. D. mm/in	Max. Working Pressure Bar/PSI	Max. End Load kN/Lbs	Axial Displacement mm/in	Dimensions			Bolts Size		Weight Kgs/Lbs
					A mm/in	B mm/in	C mm/in	No.	mm/in	
32	42.2	20	2.80	0 ~ 1.2	66	102	46		M10 x 55	0.6
1.25	1.660	300	649	0 ~ 0.05	2.60	4.00	1.81	2	3/8 x 2-1/8	1.4
40	48.3	20	3.66	0 ~ 1.2	72	109	46		M10 x 55	0.7
1.5	1.900	300	850	0 ~ 0.05	2.83	4.29	1.81	2	3/8 x 2-1/8	1.5
50	60.3	20	5.71	0 ~ 1.7	85	117	47		M10 x 70	0.8
2	2.375	300	1330	0 ~ 0.07	3.35	4.61	1.85	2	3/8 x 2-3/4	1.7
65	73.0	20	8.37	0 ~ 1.7	98	132	47		M10 x 70	0.9
2.5	2.875	300	1950	0 ~ 0.07	3.86	5.20	1.85	2	3/8 x 2-3/4	2.1
65	76.1	20	11.01	0 ~ 1.7	100	136	47		M10 x 70	1.0
---	---	---	---	---	---	---	---	---	---	---
80	88.9	20	12.41	0 ~ 1.7	113	148	48		M10 x 70	1.2
3	3.500	300	2885	0 ~ 0.07	4.45	5.83	1.88	2	3/8 x 2-3/4	2.6
100	114.3	20	24.77	0 ~ 4.1	146	182	53		M10 x 70	1.9
4	4.500	300	5565	0 ~ 0.16	5.75	7.17	2.09	2	3/8 x 2-3/4	4.1
125	141.3	20	32.45	0 ~ 4.1	175	229	53		M12 x 75	2.6
5	5.563	300	7290	0 ~ 0.16	6.89	9.02	2.09	2	1/2 x 3	5.7
150	165.1	20	44.30	0 ~ 4.1	200	246	54		M12 x 75	3.1
---	---	---	---	---	---	---	---	---	---	---
150	168.3	20	46.02	0 ~ 4.1	203	249	54		M12 x 75	3.1
6	6.625	300	10340	0 ~ 0.16	8.00	9.80	2.13	2	1/2 x 3	6.8
200	219.1	20	78.00	0 ~ 4.8	264	330	64		M16 x 135	6.1
8	8.625	300	17525	0 ~ 0.19	10.40	12.99	2.52	2	5/8 x 5-5/16	13.4

MODEL V-Z07 STANDARD RIGID COUPLING



Nominal Size mm/in	Pipe O. D. mm/in	Max. Working Pressure Bar/PSI	Max. End Load kN/Lbs	Axial Displacement mm/in	A mm/in	B mm/in	C mm/in	Bolts Size		Weight Kgs/Lbs
								No.	mm/in	
250	273.0	35	202.21	0 ~ 3.2	327	431	65		---	10.3
10	10.750	500	45400	0 ~ 0.13	12.86	16.98	2.56	2	7/8 x 6-1/2	22.9

* Also available with hot dip zinc galvanized finished (optional).