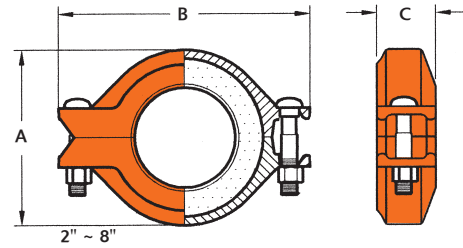
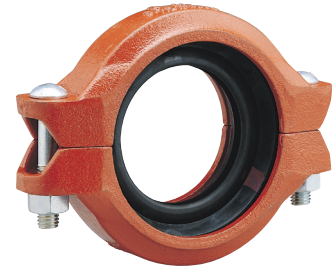




MODEL V-7706 REDUCING COUPLING

The VGS Model V-7706 reducing coupling allows for direct reduction on a piping run and eliminates the need for a concentric reducer and couplings. The specially designed rubber gasket helps prevent small pipe from telescoping into larger pipe during vertical assembly.

Caution: The Model V-7706 couplings should not be used with an end cap, as the end cap may be sucked into the pipe when draining the system.



Nominal Size mm/in	Pipe O.D. mm/in	Max. Working Pressure Bar/PSI	Max. End Load kN/Lbs	Axial Displacement mm/in	Angular Movement		Dimensions			Bolt Size mm/in	Weight Kgs/Lbs
					Per Coupling Degree (°)	Per Pipe mm/m in/ft	A mm/in	B mm/in	C mm/in		
50 x 40	60.3 x 48.3	24	4.40	0 ~ 3.2	3° - 02'	26.0	85	122	48	M10 x 55	0.9
2 x 1.5	2.375 x 1.900	350	1550	0 ~ 0.13		0.31	3.35	4.80	1.89	3/8 x 2-1/8	2.0
65 x 50	73.0 x 60.3	24	6.85	0 ~ 3.2	2° - 30'	22.0	96	144	48	M10 x 55	1.2
2.5 x 2	2.875 x 2.375	350	2270	0 ~ 0.13		0.26	3.78	5.67	1.89	3/8 x 2-1/8	2.6
65 x 50	76.1 x 60.3	24	6.85	0 ~ 3.2	2° - 24'	21.0	102	138	48	M10 x 55	1.2
---	---	---	---	---		---	---	---	---	---	---
80 x 50	88.9 x 60.3	24	6.85	0 ~ 3.2	2° - 04'	18.0	116	168	48	M12 x 75	1.5
3 x 2	3.500 x 2.375	350	3370	0 ~ 0.13		0.22	4.57	6.61	1.89	1/2 x 3	3.3
80 x 65	88.9 x 73.0	24	10.04	0 ~ 3.2	2° - 04'	18.0	116	168	48	M12 x 75	1.7
3 x 2.5	3.500 x 2.875	350	3370	0 ~ 0.13		0.22	4.57	6.61	1.89	1/2 x 3	3.7
80 x 65	88.9 x 76.1	24	10.91	0 ~ 3.2	2° - 04'	18.0	116	168	48	M12 x 75	1.7
---	---	---	---	---		---	---	---	---	---	---
100 x 50	114.3 x 60.3	24	6.85	0 ~ 4.8	2° - 04'	21.0	146	198	52	M12 x 75	2.4
4 x 2	4.500 x 2.375	350	5560	0 ~ 0.19		0.25	5.75	7.80	2.05	1/2 x 3	5.3
100 x 65	114.3 x 73.0	24	10.04	0 ~ 4.8	2° - 24'	21.0	146	198	52	M12 x 75	2.6
4 x 2.5	4.500 x 2.875	350	5560	0 ~ 0.19		0.25	5.75	7.80	2.05	1/2 x 3	5.7
100 x 65	114.3 x 76.1	24	10.91	0 ~ 4.8	2° - 24'	21.0	146	198	52	M12 x 75	2.6
---	---	---	---	---		---	---	---	---	---	---
100 x 80	114.3 x 88.9	24	14.89	0 ~ 4.8	2° - 24'	21.0	146	198	52	M12 x 75	2.4
4 x 3	4.500 x 3.500	350	5560	0 ~ 0.19		0.25	5.75	7.80	2.05	1/2 x 3	5.3
150 x 100	165.1 x 114.3	24	24.61	0 ~ 6.4	2° - 14'	20.0	202	269	52	M16 x 90	4.5
---	---	---	---	---		---	---	---	---	---	---
150 x 100	168.3 x 114.3	24	24.61	0 ~ 6.4	2° - 12'	19.0	208	275	52	M16 x 90	4.5
6 x 4	6.625 x 4.500	350	12060	0 ~ 0.25		0.23	8.19	10.83	2.05	5/8 x 3-1/2	9.9
200 x 150	219.1 x 168.3	24	53.35	0 ~ 6.4	1° - 40'	15.0	260	334	57	M20 x 120	7.6
8 x 6	8.625 x 6.625	350	20440	0 ~ 0.25		0.18	10.24	13.15	2.24	3/4 x 4-3/4	16.7
200 x 150	219.1 x 165.1	24	51.35	0 ~ 6.4	1° - 40'	15.0	260	334	57	M20 x 120	7.6
---	---	---	---	---		---	---	---	---	---	---

Deflection or angular movement is the maximum value that a coupling allows under no internal pressure.

* Also available with hot dip zinc galvanized finished (optional).