

## Capacitive Sensors

### Series 80 - PNP

Housing Sensor  $\varnothing$  18 mm  
Amplifier 40 x 12 x 26 mm

- Housing material: Sensor Brass / amplifier PA
- Sensing distance 1...8 mm adjustable
- Sensor with remote amplifier
- Sensor and amplifier fix connected with 400 mm triax-cable

Certificate:



#### Technical data

Flush mountable

Operating distance $S_n$	5 mm
Operating distance min. / max. adjustable	1...8 mm
Electrical version	3-wire DC
Output function	Normally open (NO)

#### Type NPN

##### Art.-No.

Connection diagram No.

#### Type PNP

**KAS-80-C-18/4-S**

##### Art.-No.

**833 800**

Connection diagram No.

4

Operating voltage ( $U_B$ )

10...35 V DC

Output current max. ( $I_o$ )

250 mA

Voltage drop max. ( $U_o$ )

$\leq 2.5$  V

Permitted residual ripple max.

5 %

No-load current ( $I_o$ )

Typ. 10 mA

Frequency of operating cycles max.

50 Hz

Permitted ambient temperature (sensor)

-55...+120 °C

Permitted ambient temperature (amplifier)

-25...+70 °C

LED-display

Yellow

Protective circuit

Built-in

Degree of protection IEC 60529

IP 67

Norm

EN 60947-5-2

Connection cable (sensor)

0.4 m, triax-cable

Connection cable (amplifier)

2 m, PVC, 4 x 0.14 mm<sup>2</sup>

Housing material (sensor)

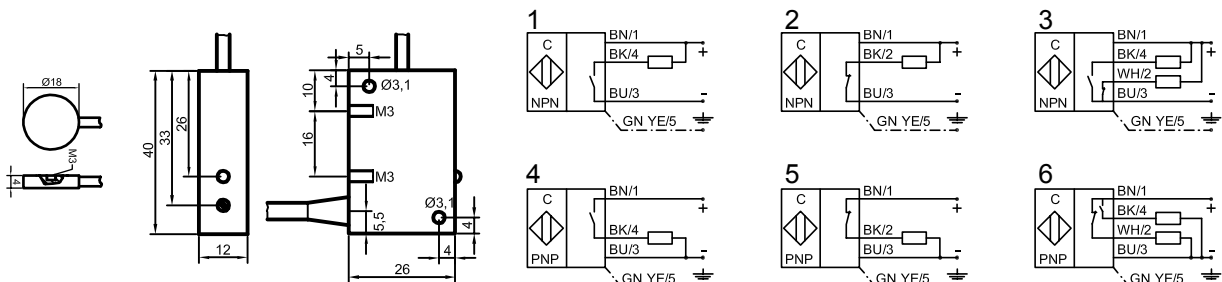
Brass

Active surface (sensor)

PTFE (FDA 21 CFR 177.1550)

Housing material (amplifier)

PA



**Made in Germany**

All specifications are subject to change without notice. (23.03.2010)