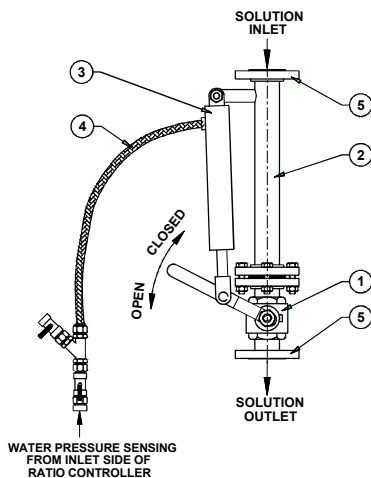


Foam Concentrate Control Valve

TECHNICAL DATA :

MODEL	CV
SIZE	40NB, 50NB, & 65NB
RATED PRESSURE	14 Kg./sq.cm. (200 PSI)
END CONNECTION	Flanged end to ANSI B 16.5 Class 150#
PRESSURE SENSING HOSE	Teflon tube with stainless steel braided cover.
TRIM CONNECTION	Brass / S.S.
FACTORY HYDROTESTED	25 Kg./sq.cm. (365 PSI)
FINISH	Epoxy Red Painted.
ORDERING INFORMATION	Please specify Model, Size of valve.



APPLICATION

Foam concentrate control valve is designed for use in bladder tank foam system or inline balance pressure proportioning system. The valve opens automatically when water supply is established through the inlet pipe of ratio controller of bladder tank or in the inline balance pressure proportioning system. The valve opens at minimum of 3 Kg. (42.8 psi) water pressure. No electric power is required to operate the valve.

SPECIFICATION

The foam concentrate control valve utilizes water as the medium to open the valve. A manual override facility is provided to open the valve. In normal condition the valve remain in closed position. When, a minimum water pressure of 3 Kg./sq.cm. (42.8 psi) is established the valve opens and closing of the valve is manual.

INSPECTION AND MAINTENANCE

A qualified and trained person must commission the system. After few initial successful tests, an authorised person must be trained to perform the inspection and testing of the system at least once in a week. The inspection should verify that all the control valves are in their proper position as per the system requirement and no damage has taken place to any component. The foam concentrate control valve / system must be operated at least once in six weeks. The total system should be fully tested at least once in a year as per NFPA / TAC manual or in accordance to the guidelines of the organisation having local jurisdiction.

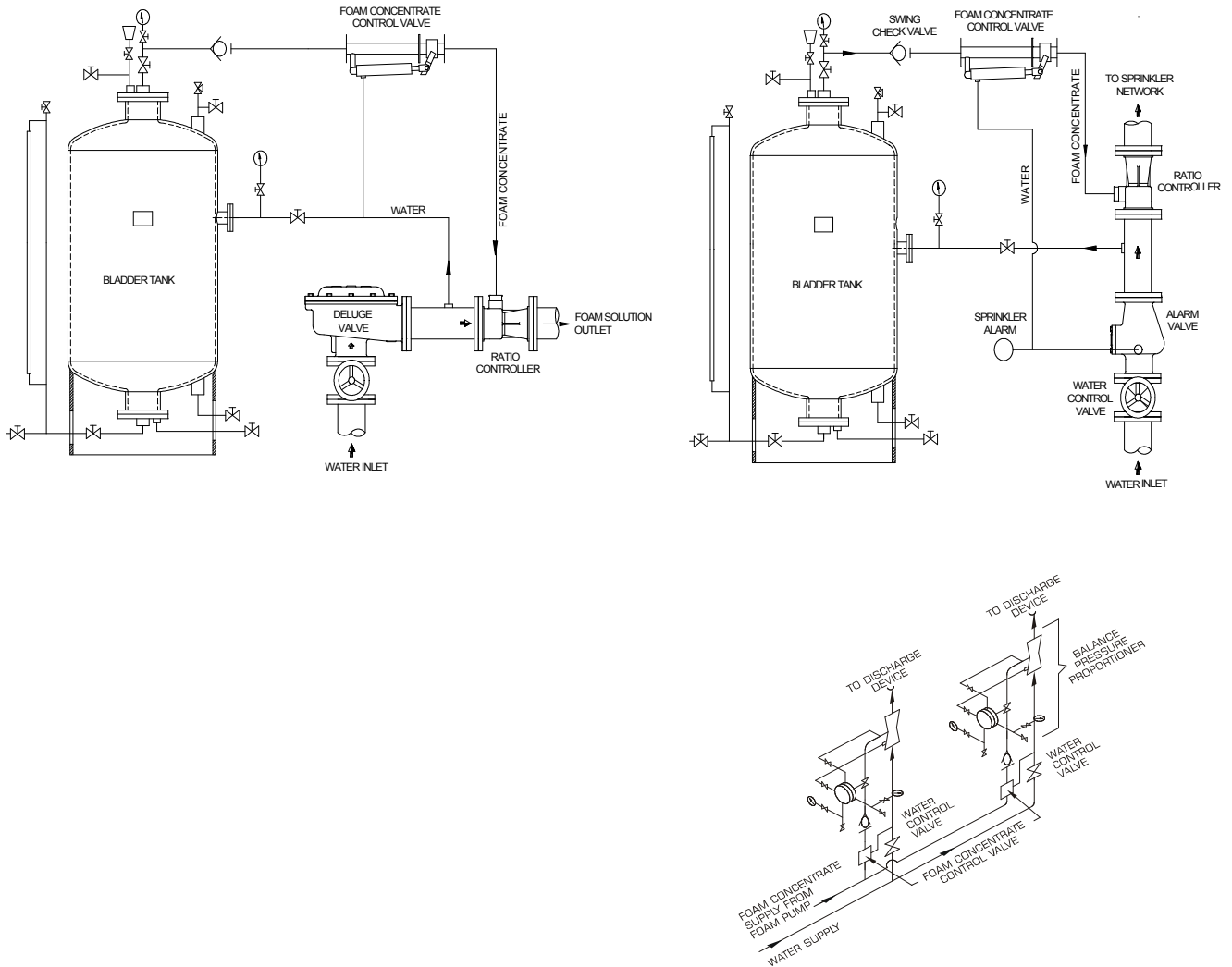
SRNO	DESCRIPTION	MATERIAL SPECIFICATION
1	Valve	Stainless Steel
2	Pipe	Stainless Steel
3	Cylinder	Stainless Steel
4	Hose	Stainless Steel
5	Flange	Stainless Steel

SELECTION OF FOAM CONCENTRATE CONTROL VALVE

RD Proportioner Size	Foam Concentrate Control Valve Size
80NB	40NB
100NB	40NB
150NB	50NB
200NB	65NB

Foam Concentrate Control Valve

TYPICAL INSTALLATION OF FOAM CONCENTRATE CONTROL VALVE



LIMITED WARRANTY

Products supplied by RAPIDROP are warranted against defects in material and workmanship for a period of Two (2) years from the date of shipment. RD's obligation under this warranty is limited to replace or repair the products or its parts, which are shown to RD's examination to be in a defective condition attributable to RD. No warranty is given for products or components which have been subject, to misuse, improper installation, corrosion, wear and tear, improper storage, modification or repaired. If the defect attributable to RD cannot be rectified by repair or replacement, then RD may elect to refund the purchase price of the equipment in complete discharge of its obligation under this Limited Warranty.

IN NO EVENT SHALL RAPIDROP BE LIABLE IN CONTRACT, STRICT LIABILITY OR ANY OTHER LEGAL THEORY, FOR INCIDENTAL, INDIRECT, SPECIAL OR CONSEQUENTIAL DAMAGES, INCLUDING DAMAGES FOR INJURY TO PERSON OR DEATH OR DAMAGE TO PROPERTY AND OR PENALTIES RESULTING FROM ANY PRODUCTS OR COMPONENT MANUFACTURED OR ASSEMBLED BY RD. THIS IS LIMITED WARRANTY ONLY. RD DISCLAIMS WITH RESPECT TO THE PRODUCTS ALL IMPLIED WARRANTIES OF MERCHANTABILITY AND ALL IMPLIED WARRANTIES OF FITNESS FOR A PARTICULAR PURPOSE. THERE IS NO WARRANTY OF ANY NATURE MADE BY RD BEYOND AS STATED ABOVE.

NOTICE :

The equipment presented in this bulletin is to be installed in accordance with the latest publication standards of NFPA or other similar organisations and also with the provision of government codes or ordinances wherever applicable. The information provided by us are to the best of our knowledge and belief, and are general guidelines only. Site handling and installation control is beyond our reach. Hence we give no guarantee for result and take no liability for damages, loss or penalties whatsoever, resulting from our suggestion, information, recommendation or damages due to our product. Product development is a continuous programme of RAPIDROP and hence the right to modify any specification without prior notice is reserved with the company.

Rapidrop Global