

MCD

1.2 | *ALU40*
Front-roll



ALU40 FRONT ROLL

DESCRIPTION

The ALU 40 roll-up door, only available in front roll version, is made to measure with double-walled installable slats of extruded aluminium 40mm height.

The doors can be used to close compartments or as a loading, access door in all types of vehicles as a replacement for conventional opening doors.

It is delivered in the form of separate parts ready to be installed.

- 1 assembled door
- 1 pair of aluminium tracks ready to be fixed into position.
- 1 tensed roller
- 1 bag of accessories

The standard finish is in RAL 7035 satin finish powder coated gray, but can also be delivered in RAL 9010, anodized, mill or in another choice of RAL.

Different kinds of closing systems and options compatible with ALU40 are available in the following



Usage dimensions	
Maximum height	2200 mm
Maximum width	2500 mm
Minimum width	550 mm
Maximum area	4 m ²
Door weight for 1 m ²	11 kg

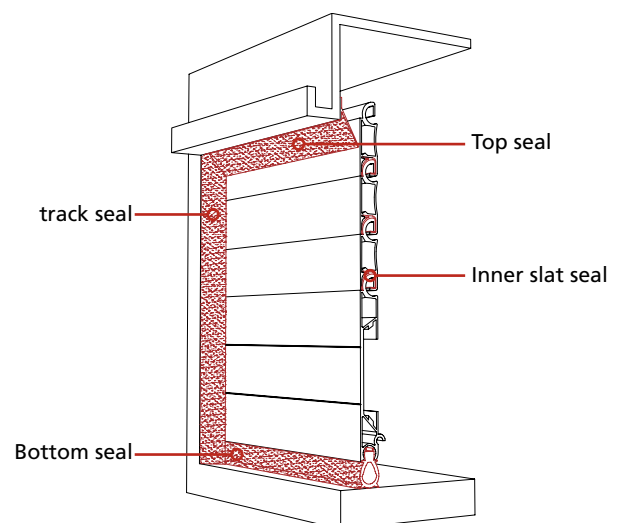
Two kinds of track available

Standard track

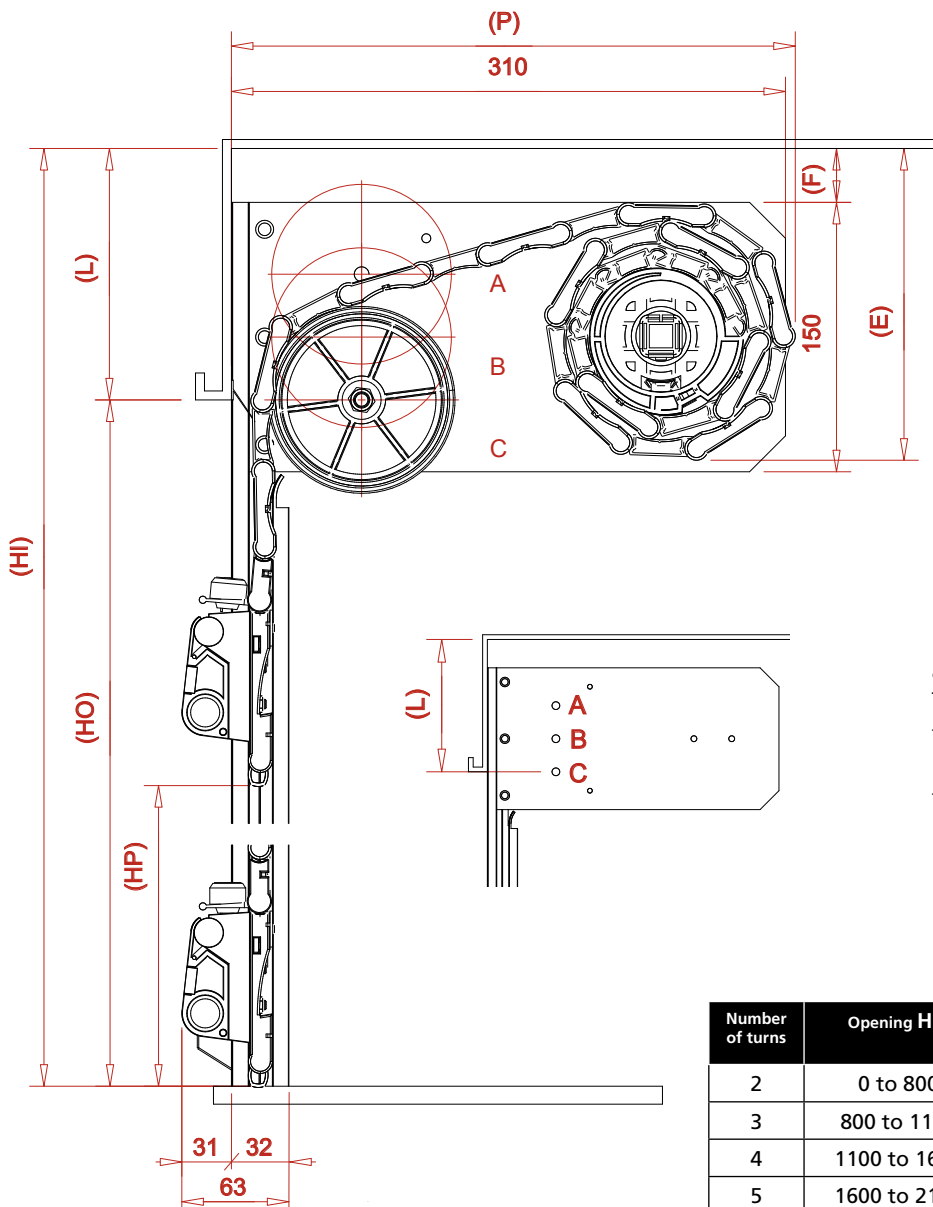
Overlapping track(*)

* Warning : the header's thickness do not exceed 9 mm to use the overlapping track.

Waterproof with 4 seals
(Detail page 4.7.1)



SETTING UP



	Description
HI	Interior Height
HO	Opening Height
HP	Passing Height
L	Header
P	Depth
LP	Passing Width
LER	Total Width

Formulae to remember:

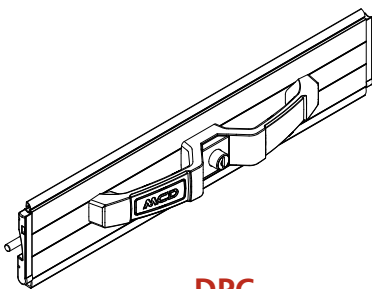
$$HI = HO + L$$

$$HP = HO - 100 \text{ mm}$$

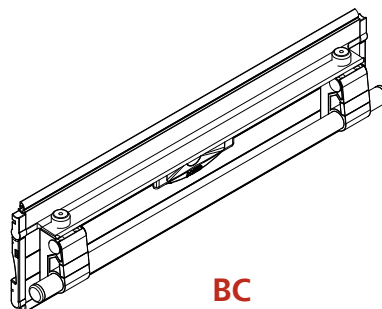
L = to be calculated according to HO and with the help of the board below. Take care: various possibilities according to the position A, B or C of the wheel. For optimum functioning of the door the position selected should be C. LP = LER - 50mm

Number of turns	Opening HO	L mini			P	E	F
		A	B	C			
2	0 to 800	80	90	120	320	190	10
3	800 to 1100	80	100	130	330	200	20
4	1100 to 1600	100	110	140	340	210	30
5	1600 to 2100	110	120	150	350	220	40

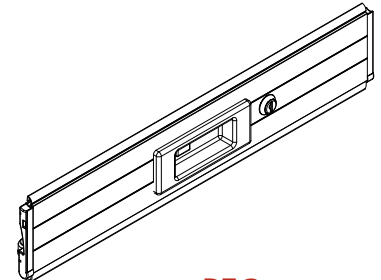
Compatible closing systems with ALU40



DPC
Double handle with key
(see page 3.1.1)

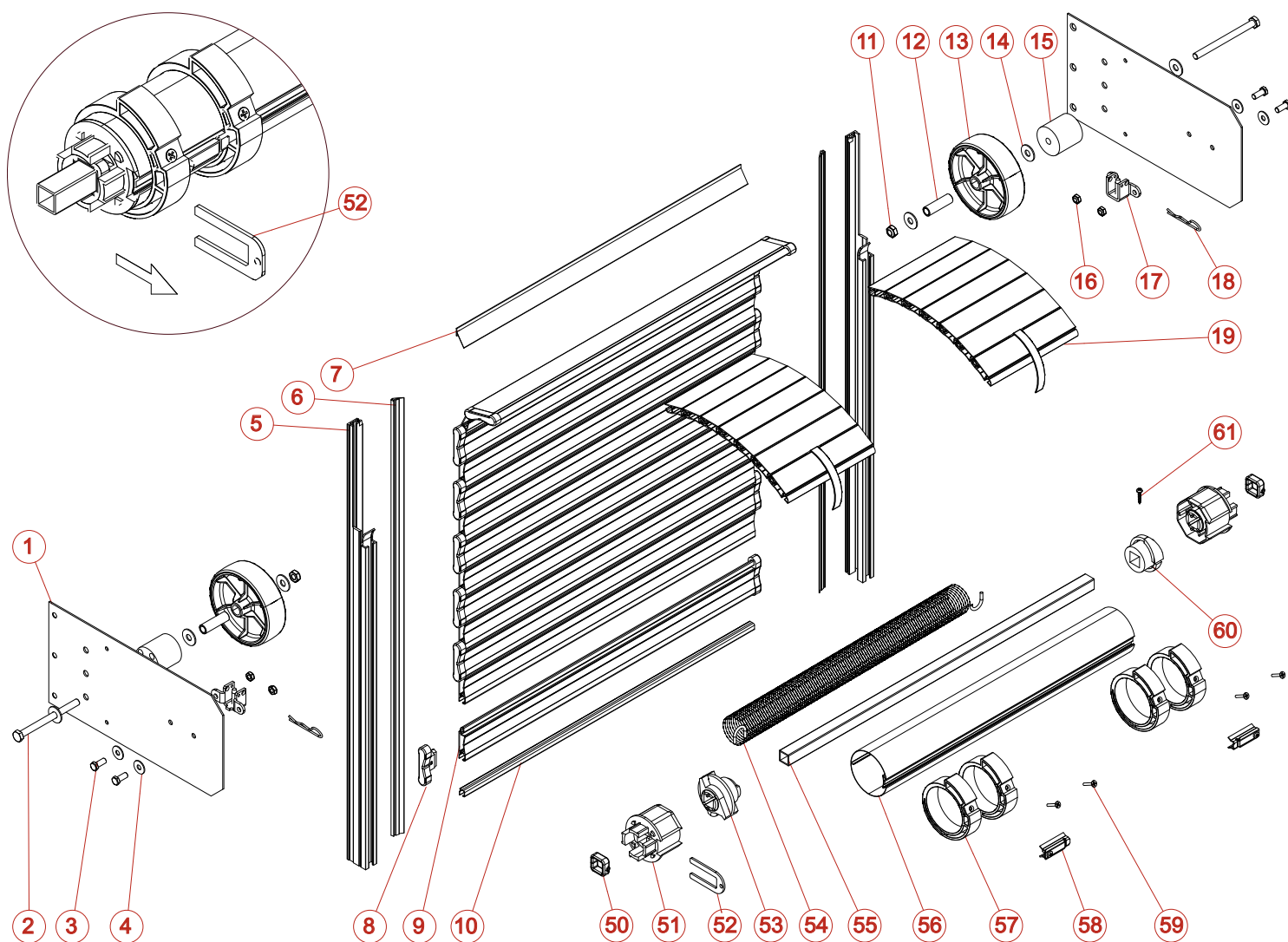


BC
Bar lift handle with key
(see page 3.2.1)



PEC
Built-in handle with key
(see page 3.3.1)

EXPLODED VIEW ALU40 FRONT ROLL



REP	CODE	DESCRIPTION
1	3275	SIDE PANEL FOR ALU40
2	3504	ZINC-COATED SCREW TH 8 X 100
3	3501	ZINC-COATED SCREW TH 6 X 16
4	3502	ZINC-COATED RING L 6
5	1300	STANDARD TRACK (M)
6	2023	TRACK SEAL (M)
7	2030	TOP SEAL (M)
8	4016	ALU40 SLAT CAP
9	1004	ABE SLAT 40 (M)
10	2004	INNER SLAT SEAL (M)
11	3506	ZINC-COATED LOCK NUT M 6
12	3109	STEEL SPACER
13	4114	WHEEL 100 DIA
14	3505	ZINC-COATED RING L 8
15	4107	PLASTIC SPACER
16	3503	ZINC-COATED LOCK NUT M 6
17	3139	ROLLER SUPPORT

REP	CODE	DESCRIPTION
18	3371	STAINLESS BETA PIN 2.5
19	8137	ALU40 LOOPS GUIDE
50	3163	STIRRUP
51	4100	TERMINAL CAP FOR TUBE 62
52	3108	BLOCKING FORK
53	4102	MOBILE ROLLER SPRING ATTACHMENT FOR TUBE 62
54		SPRING
55	3100	STEEL TUBE 16 X 16 X 1.5 (M)
56	3102	ROUND TUBE 62 (M)
57	4108	ROLLER RING 62
58	3106	ROLLER CLIP DIAM 62
59	3327	SCREW TF POZIDRIV Z 4 X 18
60	4104	FIXED ROLLER SPRING ATTACHMENT FOR TUBE 62
61	3309	STAINLESS SCREW TCL POZIDRIV 3.9 X 19

Elements list and exploded view of closing systems are introduced in chapter 3 of this documentation.