

Life Line

EMERGENCY VEHICLES



We build every vehicle with one goal in mind.

Perfection.

The ambulance you need is the only kind we build.

Custom Design + Quality = Lower Cost of Ownership

Life Line is committed to producing the best custom built ambulances in the world. We've learned that there are two ways we can make sure that happens. The first involves using our expertise to interpret your needs in designs that make your operation more efficient. We take time to learn about the way that you work and listen to your ideas about saving steps, time and effort. We've been there, so we understand the challenges that EMS providers face, from the reality of your most extreme run to the daily grind of another day "at the office."

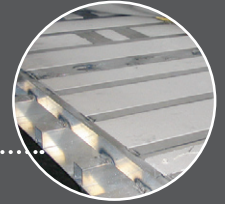
The second way we honor our commitment is by applying the same high level of quality to everything we do. Vehicles that spend more time on the road save money. If you start with better materials and craftsmanship you reduce downtime and repair costs. Reduce the physical stress for EMS providers and safety improves while operating costs go down.

The bottom line is an ambulance that performs at a high level for a long time. Greater body integrity pays off in safety, comfort, and convenience. Better engineering, fit and finish reduce wear and lower maintenance costs. Options like our slant side configuration improve aerodynamics and save fuel. It all adds up to a lower cost of ownership over the life of every Life Line vehicle.



Life Line solutions tend to be industry "firsts."

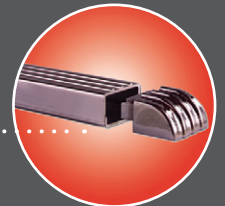
- The Life Line floor design delivers the quietest ride in the ambulance industry. 2"-thick non-deteriorating foam insulation, .125" aluminum interlocking extrusions and .050" aluminum sheeting work to dissipate heat as well as noise.



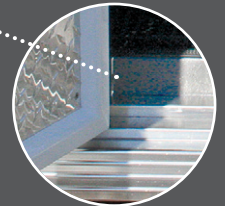
- "X-Frame corner and roof extrusions add rigidity and strength. The end result is greater body integrity.



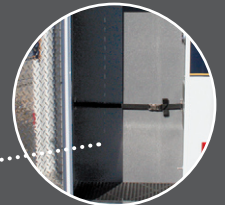
- Extruded, reinforced side impact rails improve safety and protect the vehicle.



- All exterior compartment doors are 3" thick with a labyrinth design seen in bank vault doors. Door hinges are a full 3" wide and are bolted to each door. Each door features 2"-thick foam insulation for a quiet, secure ride.



- Exterior compartments are lined with a sprayed, polyurethane finish that meets OSHA blood-borne pathogen criteria, is easy to clean and resists abrasion.



147" Body Length
Ford E350 Chassis
Chevy G3500 Chassis



147" - 167" Body Length
Walk-thru or Non-Walk-thru
Ford F350, F450, or F550
2WD or 4WD



167" Body Length
Ford E450 Chassis
Chevy G4500 Chassis



Every Life Line interior is custom designed to your specifications, with the comfort, convenience and safety features that make your job easier and keep all occupants safer.



Improved aerodynamics make Life Line's Slant Side an effective way to save fuel. That's why of we've never stopped offering the option on every chassis we build, from 147" to 171", with the same level of customization available in every Life Line ambulance.



Slant Side



Highliner

171" Body Length
Chassis Options:
Freightliner M2
Navistar 4300 or 4400
Chevy C4500



It's often said that it's the little things that make the difference. Every Life Line ambulance is full of hidden details that our customers say make a big difference. Things like door compartment panels tightly secured with threaded fasteners and locking cage nuts. Or smooth interior finishes without extra trim that can make decontamination and cleaning a chore. There's even a vapor barrier deep within the walls that helps reduce mold and bacterial growth for a patient-friendly environment that really lasts.

Attention to detail is a matter of professional pride for more than 173 Life Line employees. They see every day as another opportunity to make unequalled craftsmanship a part of every vehicle we produce. That's the way we've been building ambulances and specialized medical care vehicles in Sumner, Iowa since 1985. It's what's behind our desire to make each ambulance better and the reason we say ***"the next generation of ambulances will follow our lead."***

You're going to live with your vehicle decision for years. Before you make your final choice, be sure that you get the inside story about everything we do to make your Life Line vehicle a cut above the rest.

The only thing that comes close to a new Life Line ambulance is a handcrafted Life Line remount.

If it's time to upgrade, but a new ambulance isn't in the cards, remember that Life Line has an entire plant dedicated to remounts and wreck repair. We put the same attention to detail and craftsmanship into every rebuilt unit that we apply to every Life Line ambulance. That means the vehicle you get back represents the finest remanufactured quality on the road.



P.O. Box 299 • Sumner, Iowa 50674 • (563) 578-3317
www.LifeLineAmbulance.com