

Unique Mobile-like IR Thermographic Camera

The MobIR[®] M8, representing a landmark of IR technology progress globally, is the latest innovation from Guide Infrared who always works with innovative emotion. Guide presents M8 enriching the features exclusively for high-end IR camera before. 50Hz refresh rate? 2Mpixels CMOS? Touch screen? Auto focus? IR video recording? Whatever you expect from a thermographic camera, M8 satisfies you by its compactness, ruggedization, accuracy, efficiency, reliability, and affordability.

Features and Benefits



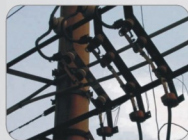
Touch Screen
Operating it easily and do complicated analyses

Infra Fusion
helping you identify where the problem exactly is



Auto Gate Technology
providing double protection to the optics and detectors

2.0 Megapixel CMOS
delivering extremely crisp visual image



Rugged Design
Magnalium housing is more robust and shock-resistant



Applications

- Predictive and preventative maintenance
- Electrical inspection
- Building diagnostics
- Technical diagnostics
- Veterinarian helper
- Portable law enforcement



Specifications

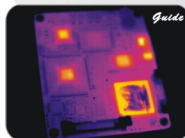
Imaging Performance	
<i>Thermal</i>	
Detector Type	Microbolometer UFPA 160x120 pixels, 25 μ m
Spectral Range	8 - 14 μ m
Field of View	20.6° X 15.5°
Thermal Sensitivity	≤0.1°C at 30°C
Image Frequency	50HZ PAL/ 60HZ NTSC
<i>Visual</i>	
Built-in Digital Video	CMOS Sensor, 1600x1200 pixels, 2 ²⁴ ture colors
Image Presentation	
External Display	2.47" TFT LCD with high resolution
Infra Fusion	Visual and IR blending
Measurement	
Temperature Range	-20°C to 250°C (350°C/1200°C optional)
Accuracy	±2°C or ±2% of reading
Measurement Modes	Auto hot & cold spot, auto alarm live/zoomed image & video; spots, areas displaying either max, min or average, line profile, histogram & isotherm band in live/frozen/saved image
Storage	
Type	Removable 2GB Mini SD card & built-in memory
Video Recording	Recording up to 30 minutes in Mini SD card
Laser Locator	
Classification Type	Class 2 semiconductor laser
Power System	
Battery Type	Recharge Li-ion Camcorder battery, field-replaceable
Battery Operating Time	4 hours continuous operation
Environment	
Operating Temperature	-10°C to +60°C
Storage Temperature	-20°C to +60°C
Interface	
USB2.0	Real-time image, video data transfer to PC and real-time control of the camera on PC
RS232 communication	Control of camera on PC
Physical Characteristics	
Size	154mmx69mmx45mm
Weight	0.35kg



Inspect electricity hot point



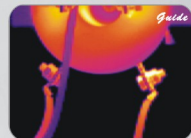
Inspect building structure



Monitoring and analysis heat distribution



Measure animal temperature



Evaluate equipment operating