

Air-crash tender FLF 80/125 One Seven® „PEGASUS“

...worldwide for fire and rescue!



The air-crash tender of the airport Leipzig - Halle
FLF 80/125 One Seven® „PEGASUS“





Fire fighting vehicle fleet of the plant fire brigade airport Leipzig - Halle

The air-crash tender FLF „PEGASUS“ in operation with One Seven® monitor for foaming an aircraft body



The new firefighting vehicle of the airport Leipzig-Halle plant fire brigade will be located in the fire station at the south runway.



Front view with open doors and roof monitor ready for operation

The **cabin** of the air-crash tender FLF „Pegasus“ consists of an aluminium construction, body and tanks are made of glass-fibre reinforced plastic (GRP).



Detailed view of the pneumatically opened driver's door

Roof monitor



The roof monitor is suitable for the operation with water as well as for the conventional foam application. When operating with water, a throwing distance of approximately **90 m** will be reached.



The roof monitor's control will be made by a joystick from the driver's cabin or, in case of need, manually at the monitor itself.

One Seven® front monitor

The One Seven® front monitor is provided for the automatic operation of compressed air foam with a throwing distance of approximately 40 m.



This front monitor is solely designed for the extinguishing operation using wet foam.

Water front monitor

A water front monitor is also provided for the operation with conventional foam.



Both front monitors are controlled from the driver's cabin by a joystick.

High-pressure (HP) fast attack reel

The electrically driven high-pressure fast attack reel is mounted on the **right** hand vehicle side in equipment compartment 2.



The HP fast attack consists of a stable hose (80 metres DN 20).

Fast attack reel One Seven®

The electrically driven fast attack reel for One Seven® is mounted on the **left** hand vehicle side in equipment compartment 1.



The OS-fast attack consists of a stable hose (40 metres DN 35) with One Seven®-C-jet stream nozzle and it can change over from wet foam to dry foam.

Both reels are mounted in **swivelling storage frames**.

Self-protection system:

With activated pump it is possible for the self protection system to generate a foam blanket or a water fog for the self-protection under the vehicle. The system will be controlled from the control panel in the driver's cabin.



Detailed view - front nozzles of the self-protection system

Light mast



The light mast (6 x 1.000 W) is mounted on the body roof.

The removable light mast control is stored in the rear equipment compartment. Light spot height: 6,6 m.

Interior view of driver's cabin



View inside the cabin

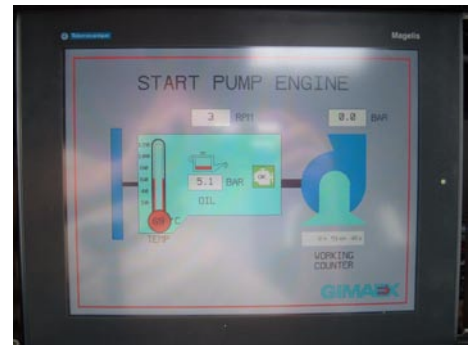
All necessary control elements incl. the large control displays are clearly arranged and designed according to the latest ergonomic factors.

Control display

The vehicle is equipped with a 15" colour control display. Through this it is possible to monitor the different functions of the hydraulic circuit, the pump module and the One Seven® unit. The control display will automatically be activated as soon as the vehicle will be started.



Control display



Display for pump engine and fire fighting centrifugal pump



Display for One Seven® unit incl. the compressor



Display for the hydraulic circuit



Technical data:

Description:	Air-crash tender FLF 80/125 One Seven®(ARFF) corresponds to the requirements of the ICAO and the ADV	
Chassis:	MAN 36.1000 VFAEG/E2 8x8 Automatic	
Engine:	MAN D2842 LXE, 12-cylinder in V-arrangement, 4-stroke direct injection turbocharger and intercooling	
Gearbox:	Renk WR 1.075 / PS 225.32	
Limit speed:	140 km/h	
Length:	11.500 mm	
Width:	3.500 mm	
Height:	4.000 mm	
Wheelbase:	1.930 + 3.570 + 1.500 mm	
perm. total weight:	38.000 kg	
Crew:	1:1	
Body manufacturer:	Gimaex Fire and Rescue GmbH	
Delivery:	2006	
Vehicle equipment:	Fire fighting centrifugal pump Fire fighting centrifugal pump Water tank Foam concentrate tank Foam concentrate tank Pressure proportioning system One Seven® system Light mast Generator Roof monitor Front monitor- water Front monitor- One Seven® Fast attack Fast attack Self protection system, Pump pressure regulation, Rear view camera, Air-condition	(NP/Normal Pressure) Hale Godiva 8FG (80FC) (HP/High Pressure) Hale Godiva 2CBPH4 12.500 litres, 2 x 750 litres, 150 litres One Seven® class B-(AFFF) 0,5%, MSR FireDos type: „OS 3100 E“ Command Light 6 x 1000 W, Light spot height: 6.600 mm GEKO 9000 Super Silent, Rosenbauer „RM60E“ (electr. remote-controlled), Akron „Firefox“ Akron „Firefox“ with One Seven® nozzle One Seven® 40 m hose reel HP 80 m hose reel 10 universal nozzles



6

Air-crash tender



one seven®

www.i-i-ir-p.de

GIMAEX

Gimaex-Schmitz Fire and Rescue GmbH

a Gimaex International Company

Essener Straße 8

57234 Wilnsdorf, Germany

Tel. +49 (0) 27 39 - 8 09 - 0

Fax +49 (0) 27 39 - 8 09 - 99

eMail info@gimaex.com

www.gimaex.com

...worldwide for fire and rescue!