



## Industrial Horizontal Shut-off Gun

**Model**                    **31137**

### FEATURES

- Flow through design makes handling easier.
- Internal stainless steel ball and seat assembly extends service life.
- Reinforced safety-latch prevents unintentional operation.

### SPECIFICATIONS

	U.S. Measure	Metric Measure
Maximum Flow.....	10.5 gpm	(40 l/m)
Maximum Pressure .....	4500 psi	(310 bar)
Maximum Temperature*.....	195°F	(90°C)
Inlet Port (1).....	3/8" NPTF	(3/8" NPTF)
Discharge Port (1).....	1/4" NPTF	(1/4" NPTF)
Weight.....	20.8 oz.	(0.623 kg)
Dimensions.....	8.4"x5.4"x1.25"	(213x136.3x31.75 mm)

\*Check individual Pump Specifications. Do not exceed pump maximums.

**SELECTION:** Select a gun to match your system flow and pressure requirements, temperature and function being performed.

**INSTALLATION:** Install the appropriate relief valve when using a shut-off gun to avoid pressure spikes when the gun is shut off. Severe damage can occur to your system without this device.

**OPERATION:** Flow through the gun occurs by squeezing the trigger on the gun. This activates the actuator rod, lifting the ball off the seat and allowing the pumped liquid to flow through the valve body chamber in the gun. Releasing the trigger shuts off the flow.

#### **⚠ CAUTIONS AND WARNINGS**

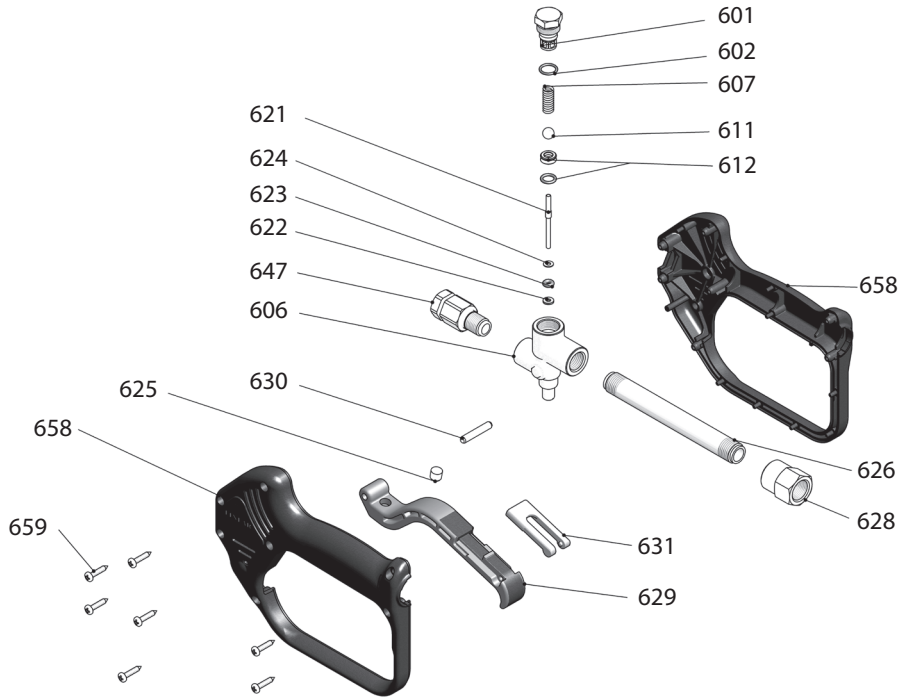
All High Pressure Systems require a primary pressure regulating device (i.e. regulator, unloader) and a secondary pressure relief device (i.e. pop-off valve, relief valve). Failure to install such relief devices could result in personal injury or damage to pump or property. CAT PUMPS does not assume any liability or responsibility for the operation of a customer's high pressure system.

Read all CAUTIONS and WARNINGS before commencing service or operation of any high pressure system. The CAUTIONS and WARNINGS are included in each service manual and with each Accessory Data sheet. CAUTIONS and WARNINGS can also be viewed online at [www.catpumps.com/cautions-warnings](http://www.catpumps.com/cautions-warnings) or can be requested directly from CAT PUMPS.

#### **WARRANTY**

View the Limited Warranty on-line at [www.catpumps.com/warranty](http://www.catpumps.com/warranty).

## EXPLODED VIEW



## PARTS LIST

ITEM	PN	MATL	DESCRIPTION	QTY.	ITEM	PN	MATL	DESCRIPTION	QTY.
601	31626	BB	Nut, Retaining	1	626	—	BB	Tube	1
602	—	NBR	O-Ring, Nut	1	628	—	BB	Fitting, Inlet (3/8" NPTF)	1
606	—	BB	Body	1	629	—	NY	Trigger, Black	1
607	31282	S	Spring, Ball	1	630	—	BB	Pin, Trigger	1
611	36099	SSSS	Ball, Seat	1	631	—	NY	Latch, Safety, Red	1
612	39051	NBR	Seat w/O-Ring	1	647	36408	BB	Fitting, Discharge (1/4" NPTF)	1
621	—	S	Rod, Actuator	1	655	—	NY	Handle, Left Half	1
622	35074	PTFE	Back-up-Ring, Rod	1	658	—	NY	Handle, Right Half	1
623	35020	FPM	O-Ring, Rod	1	659	32877	STZP	Screw, Self Threading (M3.5x18)	7
624	39004	S	Washer, Rod	1	668	31645	—	Kit, Repair (Incls: 602, 611, 612, 614, 621, 622)	1
625	—	D	Striker, Trigger	1					

MATERIAL CODES (Not Part of Part Number): BB=Brass D=Acetal FPM=Fluorocarbon NBR=Medium Nitrile (Buna-N) NY=Nylon PTFE=Pure Polytetrafluoroethylene S=304S S SS=316SS SSSS=440SS STZP=Steel/Zinc Plated

### ⚠ WARNING

#### SKIN PUNCTURE HAZARD

Do not allow spray to contact any part of the body or animals. Pumped liquids under high pressure can pierce skin and underlying tissue or can deflect debris leading to serious personal injury or death.

1. Relieve all line pressure in the inlet line to the pump and discharge line from the pump before performing any maintenance on the pump.
2. When high pressure gun is not in use, set safety trigger lock (safety latch) to avoid accidental high pressure operation and personal injury or property damage.
3. Do not check for leaks with hand. Use a piece of cardboard to check for leaks.
4. Review cleaning procedures to minimize heavy back blasting.
5. Wear adequate safety equipment and clothing when operating high pressure sprayer. Never use high pressure spray with bare feet or exposed skin, and always wear safety glasses.

### TROUBLESHOOTING

Water leaking out the discharge of the gun	<ul style="list-style-type: none"> <li>• Object lodged between the seat and ball</li> <li>• Seat worn</li> <li>• O-Ring under seat worn</li> </ul>
Water leaking out the lever area	<ul style="list-style-type: none"> <li>• O-Ring around push rod worn</li> </ul>
Excessive weeping	<ul style="list-style-type: none"> <li>• Seat worn</li> </ul>

### OPTIONAL LANCES

32036	Lance, Single, Square Insulated - Black-36"-1/4", 3650 PSI
32042	Lance, Single, Square Insulated - Stainless Steel-36"-1/4", 3650 PSI
32264	Lance, Single, Molded - Zinc Plated-24"-1/4"BSP, 3650 PSI
36267	Lance, Single, Molded - Zinc Plated-36"-1/4"BSP, 3650 PSI
32268	Lance, Single, Molded - Zinc Plated-48"-1/4"BSP, 3650 PSI

### WARRANTY

#### 90 Day Warranty

Refer to complete Cat Pumps Warranty for further information.



#### CAT PUMPS

1681 - 94TH LANE N.E. MINNEAPOLIS, MN 55449-4324  
 PHONE (763) 780-5440 — FAX (763) 780-2958  
 e-mail: techsupport@catpumps.com  
 www.catpumps.com