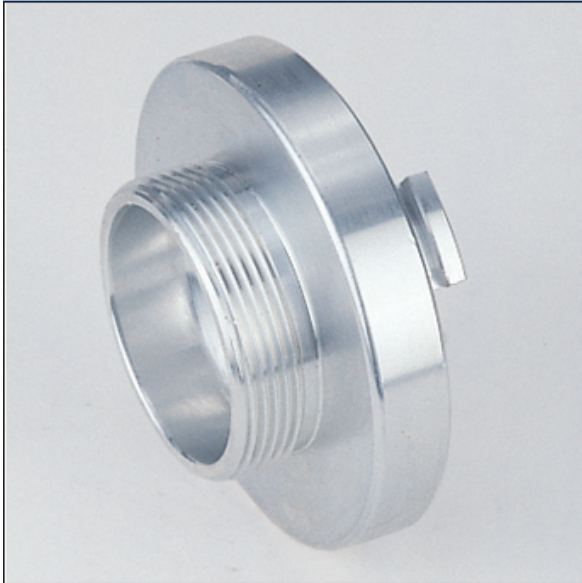


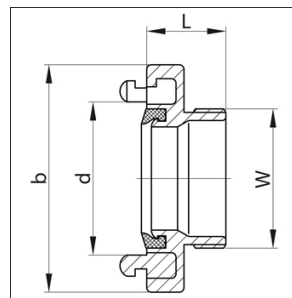
- Aluminium alloys (A)
- Copper alloys (C)
- High grade steel (St)

Adapters with male thread



1201

Adapters with male thread are supplied without flat seals.



1201

Nominal size	Lug spacing b (mm)	Inside dia. d (mm)	Male thread W	Face-to-face length L (mm)	Weight (kg)	Ident-No.	Remarks	Alloy
25=D-DS	31	13	G ½ A	39	0,280	50330246		A
25=D-DS	31	12	G ½ A	30	0,085	60189133		A
25=D-DS	31	18	G ¾ A	30	0,070	40170731		A
25=D-DS	31	18	G ¾ A	30	0,270	40170791		A
25=D-DS	31	18	G ¾ A	39	0,300	40170746		A
25=D-DS	31	18	G 1 A	30	0,075	40252531		A
25=D-DS	31	18	G 1 A	30	0,075	40252508	seal silicone	A
25=D-DS	31	18	G 1 A	30	0,075	40252532	cast PN 10	A
25=D-DS	31	18	G 1 A	30	0,215	40252591		A
25=D-DS	31	18	G 1 A	30	0,215	40252593	PN 40	A
25=D-DS	31	18	G 1 A	42	0,240	60446946		A
32-DS	44	25	G 1 A	33	0,105	30166731		A
32-DS	44	25	G 1 A	33	0,305	30166791		A
32-DS	44	25	G 1¼ A	32	0,105	30175531		A
32-DS	44	25	G 1¼ A	32	0,330	30175591		A
38-DS	51	32	G 1¼ A	32	0,135	50083331		A
38-DS	51	32	G 1½ A	33	0,135	40252631		A
38-DS	51	32	G 1½ A	33	0,535	40252691		A
58-C	66	18	G ¾ A	36	0,300	40266331		A

Nominal size	Lug spacing b (mm)	Inside dia. d (mm)	Male thread W	Face-to-face length L (mm)	Weight (kg)	Ident.No.	Remarks	Alloy
52=C	66	22	G 1 A	36	0,230	40252731		A
52=C	66	22	G 1 A	36	0,550	40252791		A
52=C-DS	66	22	G 1 A	36	0,700	40465546		A
52=C	66	30	G 1½ A	36	0,225	40045131		A
52=C	66	30	G 1½ A	36	0,620	40045191		A
52=C-DS	66	30	G 1½ A	36	0,225	40428731		A
52=C-DS	66	30	G 1½ A	36	0,700	40465646		A
52=C	66	38	G 1½ A	32	0,200	40145731		A
52=C	66	38	G 1½ A	32	0,200	40145732	cast PN 10	A
52=C	66	38	G 1½ A	32	0,600	40145791		A
52=C-DS	66	38	G 1½ A	32	0,200	40270731		A
52=C-DS	66	38	G 1½ A	56	0,700	40465746		A
52=C	66	45	G 2 A	32	0,210	40047831		A
52=C	66	45	G 2 A	32	0,210	40047832	cast PN 10	A
52=C	66	45	G 2 A	32	0,560	40047891		A
52=C-DS	66	45	G 2 A	32	0,210	60466131	seal silicone	A
52=C-DS	66	45	G 2 A	32	0,220	40375431		A
52=C-DS	66	45	G 2 A	32	0,695	40414446		A
52=C	66	45	G 2½ A	37	0,265	40253031		A
65	81	36	G 1½ A	69	0,500	60207433		A
65	81	49	G 2 A	42	0,335	30156531		A
65-DS	81	49	G 2 A	42	0,345	30300131		A
65	81	49	G 2 A	42	1,400	30156591		A
65	81	58	G 2½ A	41	0,370	30156731	NEN 3374	A
65	81	58	G 2½ A	48	1,100	40190991		A
65-DS	81	58	G 2½ A	41	0,350	30228031		A
65-DS	81	58	G 2½ A	39	0,775	30359146		A
65	81	58	G 3 A	42	0,400	40153031		A
65-DS	81	58	51/5 TPI	42	0,350	40205133		A
75=B	89	48	G 2 A	38	0,410	40464731		A
75=B-DS	89	50	G 2 A	59	1,600	40415746		A
75=B	89	65	G 2½ A	38	0,380	40108631		A
75=B	89	65	G 2½ A	41	0,380	40108632	cast PN 10	A
75=B	89	65	G 2½ A	38	1,050	40108691		A
75=B-DS	89	65	G 2½ A	38	0,360	40388531		A
75=B-DS	89	65	G 2½ A	38	0,380	40108608	seal silicone	A
75=B-DS	89	65	G 2½ A	38	1,300	40412246		A
75=B	89	65	G 3 A	40	0,365	40253131		A
75=B	89		G 3 A	41	0,365	40253132	cast PN 10	A
75=B	89	65	G 3 A	38	1,110	40253291		A
75=B-DS	89	65	G 3 A	40	0,365	40388631		A
75=B-DS	89	65	G 3 A	40	0,390	40388608	seal silicone	A
75=B-DS	89	65	G 3 A	36	1,700	40412746		A
90-DS	105	78	G 3 A	65	0,650	60264433		A

Nominal size	Lug spacing b (mm)	Inside dia. d (mm)	Male thread W	Face-to-face length L (mm)	Weight (kg)	Ident.No.	Remarks	Alloy
100	115	90	G 4 A	74	1,030	40075932	cast PN 10	A
110=A-DS	133	100	G 4 A	47	0,985	60581831	seal silicone	A
110=A-DS	133	100	G 4 A	47	1,050	40058931		A
110=A-DS	133	100	G 4 A	45	0,910	40058932	cast PN 10	A
110=A-DS	133	100	G 4 A	44	2,400	40132992	cast PN 10	A
110=A-DS	133	100	G 4 A	70	3,100	60672346		A
150-DS	160	130	G 6 A	98	2,560	30175732	3 lugs	A

Adapters Storz System with NH/NPT/NPSH/QST North-American Standard, page 103/104.