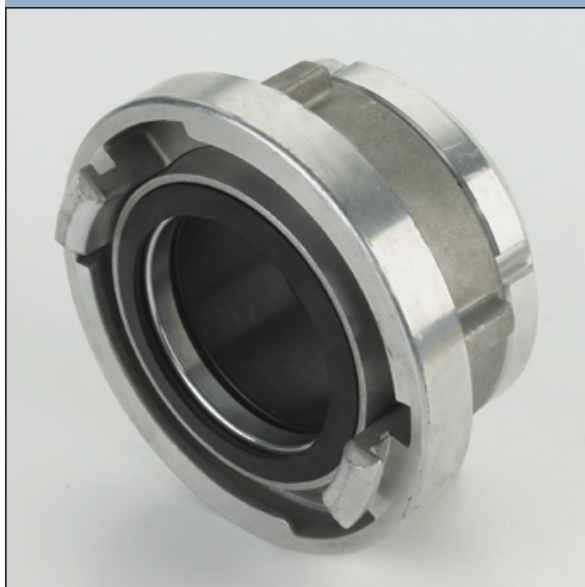


- Aluminium alloys (A)
- Copper alloys (C)
- High grade steel (St)

Adapters "FTS" Storz System (full time swivel under pressure)



1200 D

Twist in fire hoses can cause uncontrolled movements of connected fittings. This can be avoided by using adapters with a ball bearing threaded tail piece at the fitting to have a "full time swivel" under pressure. Therefore AWG Turbo-Nozzles have "full time swivel" adapters as standard.

Nominal size	Lug spacing b (mm)	Female thread	Inside dia. (mm)	Total length (mm)	Weight (kg)	Ident-No.	Remarks	Alloy
52=C	66	G2	44	60	1,580	40487833		A
75=B	89	G2	50	65	1,000	40487933		A
75=B	89	G 2 ½	65	65	1,080	40488033		A
110=A-DS	133	G 4	100	70	2,650	30013733		A
110=A-DS	133	G 4 ½	100	70	2,650	30013833		A
125	148	G 5	115	64	1,450	30381637	with locking device	A