

EQUALIZER TOP CONTROL PUMPER



WATERMAN COMMUNITY FIRE PROTECTION DISTRICT WATERMAN, ILLINOIS

TECHNICAL SPECS

- International 4400 4-Door Chassis
- MaxxForce 9, 330-HP Diesel Engine
- Allison 3000 EVS Automatic Transmission
- Five (5) man cab seating with four (4) SCBA Seats
- Heavy Duty 3/16" Aluminum Body
- ROM Roll Up Doors
- 1000-Gallon Poly Tank with 20-Gallon foam tank
- One (1) 2 ½" Fireman's Friend Tank fill, right side
- Waterous CXS, 1250-GPM Pump
- Operator's panel across top of body
- Three (3) 2 ½" Discharges, two (2) left and one (1) right side
- Three (3) 3" Discharges, one (1) right side, one (1) rear and one (1) over pump
- One (1) 2 ½" Gated Suction, left side
- One (1) 5" Suction, rear
- Waterous Aquis 1.5 Foam System with foam fill system
- Two (2) 1 ½" Preconnects, behind the cab
- Two (2) Dual bottle Air bottle compartments, one (1) each side
- Ladder, Suction hose and Pike pole storage through tank with rear access
- Zico Top Access ladder, rear mounted
- Progressive Dynamics on-board battery charger
- Kussmaul Super Auto Eject 120-volt shoreline connection
- Kussmaul Air Eject
- Two (2) Air Horns, one (1) each side of hood
- Code 3 Electronic Siren with 100-watt Cast Products speaker
- Two (2) FRC Spectra LED telescopic scene lights, one (1) each side
- One (1) Whelen LED scene light, rear
- Whelen LED Warning Light Package
- Chevron pattern striping, rear
- 9' 6" Overall height
- 31' 6" Overall length
- 256" Wheelbase
- 145" Cab to Axle
- 14,000 FAWR
- 30,000 RAWR
- 44,000 GVWR

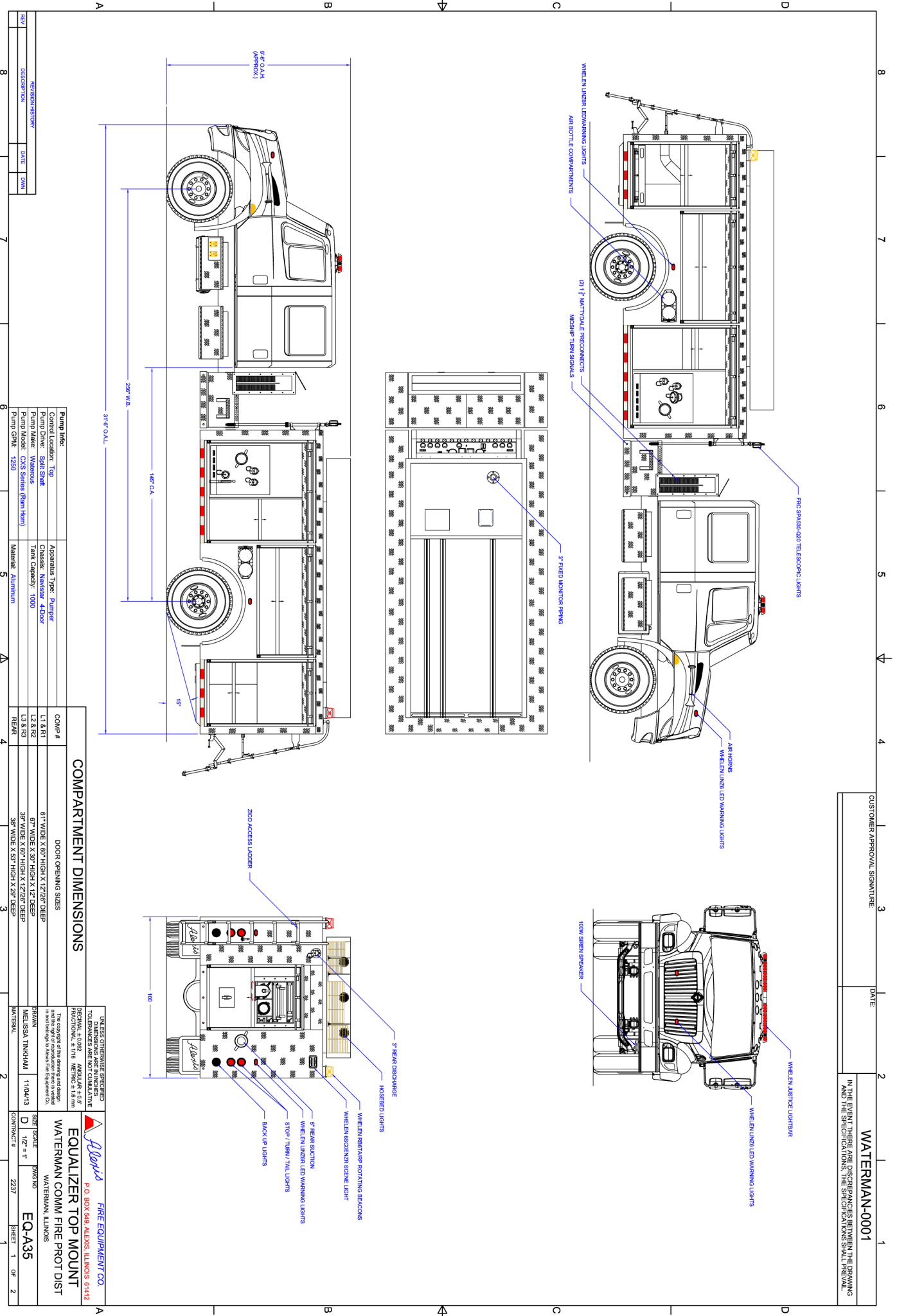


To view more photos,
visit www.AlexisFire.com

**WE WOULD LIKE TO THANK
THE WATERMAN COMMUNITY
FIRE PROTECTION DISTRICT FOR
THEIR BUSINESS.**



Demand To Be Different.



CUSTOMER APPROVAL SIGNATURE: _____ DATE: _____

IN THE EVENT THERE ARE DISCREPANCIES BETWEEN THE DRAWING AND THE SPECIFICATION, THE SPECIFICATION SHALL PREVAIL.

WATERMAN-0001

COMPARTMENT DIMENSIONS

COMP #	DOOR OPENING SIZES
L1 & R1	61" WIDE X 60" HIGH X 122 5/8" DEEP
L3 & R3	67" WIDE X 30" HIGH X 122 5/8" DEEP
REAR	38" WIDE X 60" HIGH X 122 5/8" DEEP
	38" WIDE X 57" HIGH X 28" DEEP

COMP #	DOOR OPENING SIZES
L1 & R1	61" WIDE X 60" HIGH X 122 5/8" DEEP
L3 & R3	67" WIDE X 30" HIGH X 122 5/8" DEEP
REAR	38" WIDE X 60" HIGH X 122 5/8" DEEP
	38" WIDE X 57" HIGH X 28" DEEP

Pump Info:	Apparatus Type: Pumper
Control Location: Top	Chassis: Navigator 4-Door
Pump Drive: Split Shaft	Tank Capacity: 1000
Pump Make: Waterous	
Pump Model: CCS Series (Rear Horn)	
Pump GPM: 1250	Material: Aluminum

REV	DESCRIPTION	DATE	DWN
8			
7			
6			
5			
4			
3			
2			
1			

UNLESS OTHERWISE SPECIFIED, DIMENSIONS ARE IN INCHES. TO DIMENSIONS ARE NOT CUMULATIVE.
DESIGNED BY: J. COOPER
APPROVED BY: J. COOPER
DATE: 11/04/13
DRAWN BY: M. SUSA
CHECKED BY: J. COOPER
MATERIALS: ALUMINUM

UNLESS OTHERWISE SPECIFIED, DIMENSIONS ARE IN INCHES. TO DIMENSIONS ARE NOT CUMULATIVE.
DESIGNED BY: J. COOPER
APPROVED BY: J. COOPER
DATE: 11/04/13
DRAWN BY: M. SUSA
CHECKED BY: J. COOPER
MATERIALS: ALUMINUM

SIZE	SCALE	DATE	BY
D	1/2" = 1'	11/04/13	M. SUSA
CONTINUED #			
2237			