

# CUSTOM TOP CONTROL EQUALIZER PUMPER



## VILLAGE OF HAMPTON FIRE DEPARTMENT HAMPTON, ILLINOIS

### TECHNICAL SPECS

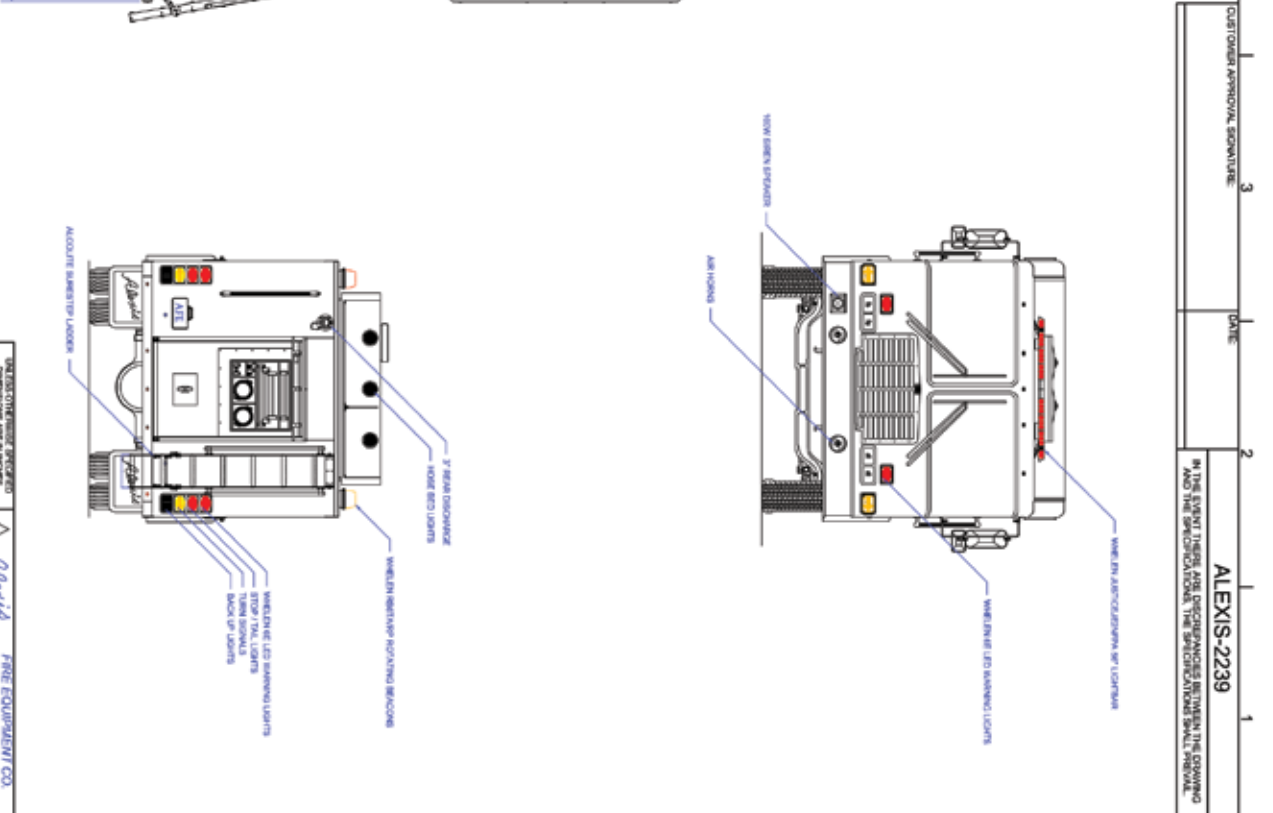
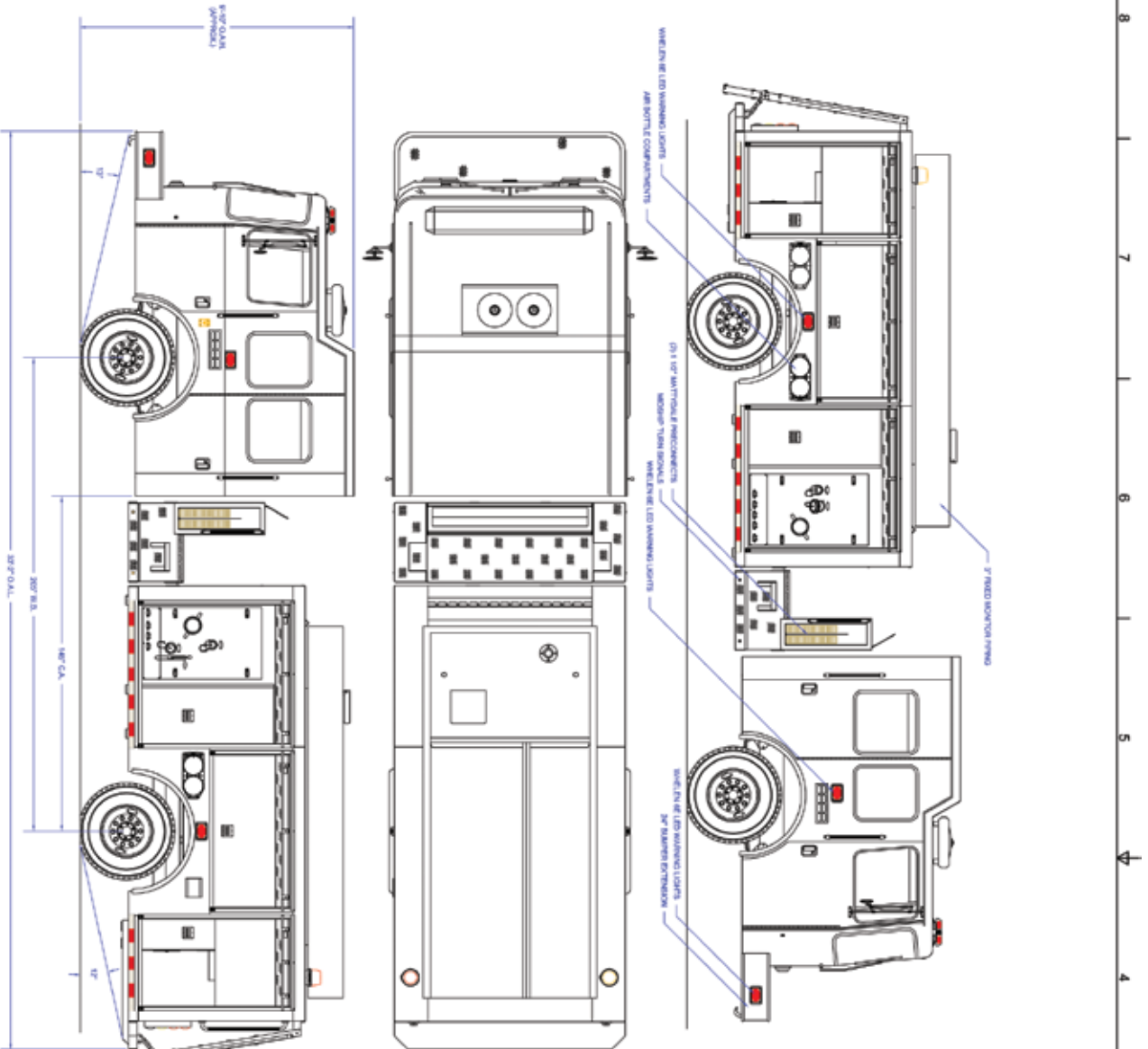
- HME 1871-W, MFDxL 12" raised roof Chassis
- Cummins ISL9, 450-HP Diesel Engine
- Allison 3000 EVS Automatic Transmission
- Six (6) Man Cab Seating with five (5) SCBA seats
- Heavy Duty 3/16" Aluminum Body
- ROM Painted Roll Up Doors
- 1000-Gallon Poly Tank
- Darley PSM 1500-GPM Pump
- Pump operator's panel across top of body
- Two (2) 2 1/2" Discharges, one (1) each side
- Three (3) 3" Discharges, one (1) right, one (1) rear and one (1) over pump
- One (1) 2 1/2" Gated Suction, left side
- Two (2) 1 1/2" Mattydale Preconnects, behind cab
- 24" Front bumper extension with 6" suction, 1 1/2" Preconnect and center hosewell
- On Spot Automatic Tire chains
- FireCom Intercom system
- EMS storage box, cab
- Custom Backboard storage compartment, back of cab
- Three (3) Dual bottle Air bottle compartments, one (1) left and two (2) right side
- Ladder, Suction hose and Pike pole storage through the tank with rear access
- One (1) Sure-Step Top access Ladder, rear mounted
- Two (2) Air Horns, front bumper
- Kussmaul Pump Plus on-board battery charger/air compressor with Auto Eject
- Whelen Electronic Siren with 100-watt Cast Products speaker
- One (1) Optronics hand held Spotlight, cab
- Whelen Scene Light Package
- Whelen LED Warning Light Package
- Chevron pattern striping, rear
- 9' 10" Overall height
- 33' 2" Overall length
- 205" Wheelbase
- 145" Cab to Axle
- 18,000 FAWR
- 27,000 RAWR
- 45,000 GVWR



To view more photos,  
visit [www.AlexisFire.com](http://www.AlexisFire.com)

WE WOULD LIKE TO THANK  
THE VILLAGE OF HAMPTON FIRE  
DEPARTMENT FOR THEIR BUSINESS.





CUSTOMER APPROVAL SIGNATURE: \_\_\_\_\_ DATE: \_\_\_\_\_

IN THE EVENT THERE ARE DISCREPANCIES BETWEEN THE DRAWING AND THE SPECIFICATION, THE SPECIFICATION SHALL PREVAIL.

**ALEXIS-2239**

**COMPARTMENT DIMENSIONS**

Comp. #	DOOR OPENING SIZE
1	60" WIDE X 60" HIGH X 27" DEEP
2	60" WIDE X 37" HIGH X 17" DEEP
3	37" WIDE X 60" HIGH X 27" DEEP
4	37" WIDE X 67" HIGH X 27" DEEP

**UNRESTRICTED SERVICE**  
 DIMENSIONS ARE IN FEET AND INCHES. TOTAL LENGTH IS 33' 0".  
 FUNCTIONAL 9' 6". HEIGHT IS 8' 6".

**TOP MOUNT EQUALIZER**  
 ALEXIS FIRE EQUIPMENT  
 ALEXIS, ILLINOIS

700 800 360 ALEXIS, ILLINOIS 6142

555000  
 L. COBBIN  
 9602014

TOTAL PRICE: 250790  
 D 1/2" x 1"  
 CONTINUED # 2239

Pump Make	Apparatus Type	Pumper
Control Location	Top	
Pump Drive	Split Shaft	
Pump Motor	Drive	
Pump Model	PSM	
Pump GPM	1500	

COMP #	LT & RT	LT & RT	LT & RT
1	1	1	1
2	1	1	1
3	1	1	1
4	1	1	1